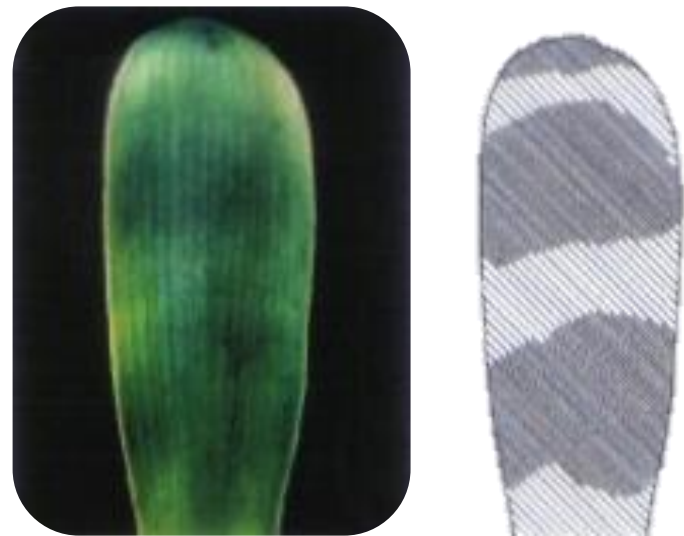


Non-Longitudinal Variegated Leaves

Light of Buddha



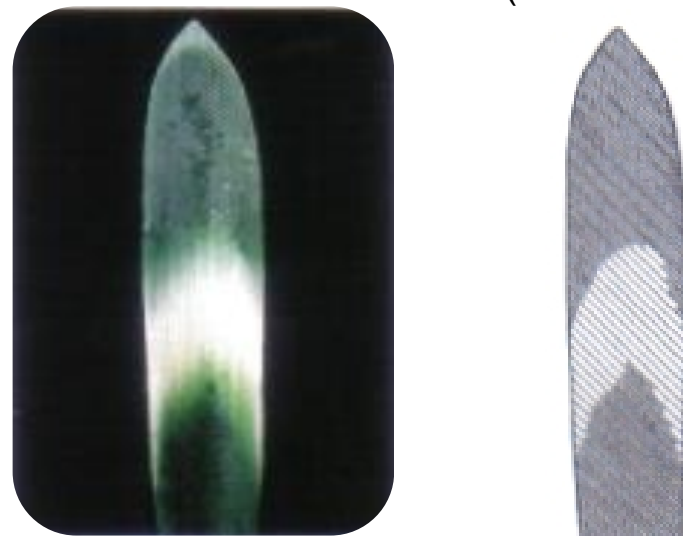
“Shu Ban Lan” *Clivia* is a *Clivia* from China. Any leaf that has non-distinct horizontal white or yellow areas or blotches on an otherwise green leaf or longitudinally variegated leaf. Ideally the areas should be present on all mature leaves. (In China, the name Light of Buddha refers to something like the aperture around the Buddha in the mythology)



The Chinese Light of Buddha *Clivia* is often confused with the Japanese Akebono *Clivia*, however, one can easily tell them apart ... The Japanese Akebono *Clivia* has always had completely white (grey) horizontal bands on the leaves and the leaves are long and narrow, while the Chinese Light of Buddha *Clivia* has yellow coloured bands across the leaves and the leaves are broad and short. The horizontal bands of Chinese Light of Buddha *Clivia* change with time, the colour varying from yellow to white.

Akebono-Fu

(Transverse Banding)

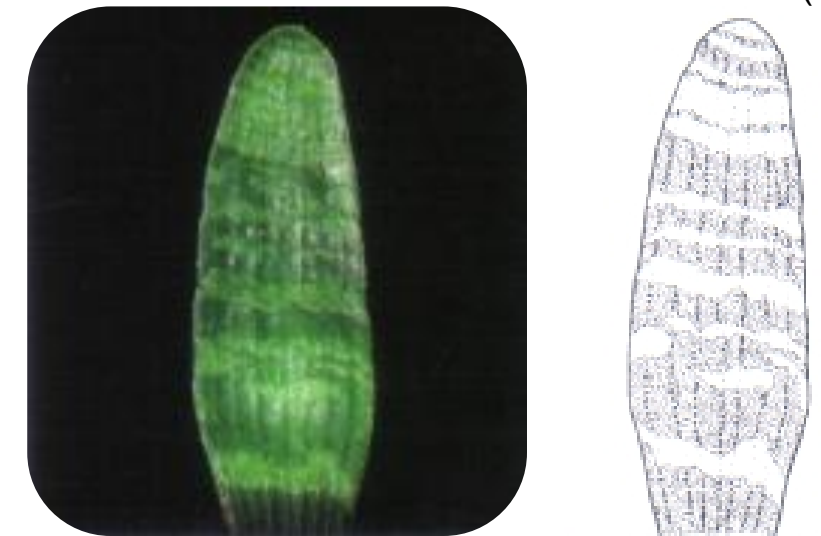


Any leaf that has one or more broad, often diffuse cream band(s). These bands lie transverse across the middle of the leaf. Ideally the banding of the leaves is regularly spaced. (Akebono means sunrise. This variegation is associated with the morning sky of sunrise. Akebono-Fu is named after the cultivar of *Rohdea japonica* “Akebono”.)



Tiger

(Tora-Fu)



The leaf’s surface has raised bands reminiscent of the brindled stripes of a tiger.

