

ISSN 1819-1460

CLIVIA NEWS

~ QUARTERLY NEWSLETTER OF THE CLIVIA SOCIETY ~



VOLUME 19 NUMBER 1 ~ JANUARY - MARCH 2010

CLIVIA NEWS

THE OBJECTIVES OF THE CLIVIA SOCIETY

1. To coordinate the interests, activities and objectives of constituent Clivia Clubs and associate members;
2. To participate in activities for the protection and conservation of the genus *Clivia* in its natural habitat, thereby advance the protection of the natural habitats and naturally occurring populations of the genus *Clivia* in accordance with the laws and practices of conservation;
3. To promote the cultivation, conservation and improvement of the genus *Clivia* by
 - 3.1 the exchange and mutual dissemination of information amongst Constituent Clivia Clubs and associate members;
 - 3.2 where possible, the mutual exchange of plants, seed and pollen amongst Constituent Clivia Clubs and associate members; and
 - 3.3 the mutual distribution of specialised knowledge and expertise amongst Constituent Clivia Clubs and associate members;
4. To promote the progress of and increase in knowledge of the genus *Clivia* and to advance it by enabling research to be done and by the accumulation of data and dissemination thereof amongst Constituent Clivia Clubs and associate members;
5. To promote interest in and knowledge of the genus *Clivia* amongst the general public; and
6. To do all such things as may be necessary and appropriate for the promotion of the abovementioned objectives.

CLIVIA EXECUTIVE COMMITTEE MEMBERS

✂ CHAIR	Johan Spies Cell 083 652 6130	PO Box 17195, Bainsvlei 9338, South Africa E-mail: spiesjj.sci@ufs.ac.za
✂ VICE-CHAIR	Christo Topham Tel +27 12 542 3693	PO Box 54478, Nina Park, 0156, South Africa Cell: 082 497 5879
✂ SECRETARY	Lena van der Merwe Tel & Fax +27 12 804 8892	PO Box 74868, Lynnwood Ridge, 0040, South Africa E-mail: cliviasoc@mweb.co.za
✂ TREASURER & ADDITIONAL MEMBER	Sakkie Nel Tel + 27 12 361 6415 Fax 086 639 4077	PO Box 35235, Menlo Park 0102 E-mail: corgas@vodamail.co.za
✂ ADDITIONAL MEMBER	Ken Smith Tel +61 2 47543287	593 Hawkesbury Rd., Winmalee, NSW 2777, Australia E-mail: cliviasmith@hotmail.com

REPRESENTATIVES OF CONSTITUENT CLIVIA CLUBS

✂ Cape	Claude Felbert, John van der Linde and Dave Garriock
✂ Eastern Province	Thys Groenewald, Andre Calitz, Willie Le Roux
✂ Free State	Piet Loubcher
✂ Garden Route	Piet Theron
✂ Joburg	G Middlewick and M Turner
✂ KwaZulu-Natal	Brian Tarr and Francois van Rooyen
✂ Lowveld	Paul Kloeck
✂ New Zealand	Tony Barnes
✂ Northern	Peter Lambert, Tino Ferero and Lena van der Merwe
✂ Northern Free State	Louis Chadinha

Table of Contents

Moet nog saamstel

The Clivia Society Newsletter started as a black on white news-sheet dated July 1992, numbered Volume 1 number 1, called 'Clivia Club'. It formed a means of communication for people interested in the plant genus *Clivia*. It was edited/written by Nick Primich with a frequency of 3, 5, 8 & 5 during the first 4 years, using the publication month in the volume.

The frequency was fixed on four annually with Vol. 5 No 1 of March 1996.

The date changed to the southern hemisphere seasons with Vol. 8 No 1 of Autumn 1999. The first three used yellow paper as cover. The name changed to 'CLIVIA CLUB NEWSLETTER' with Vol. 9 No 1 Autumn 2000 with full colour photos on the cover pages. Another name change to 'CLIVIA SOCIETY NEWSLETTER' came with Vol. 10 No 4 Summer 2000, and in 2005 reverted to a quarterly number.

CLIVIA NEWS is the continuation of this series.

EDITORIAL

2010! Those numbers have a ring about them. Perhaps because they've been with us some time like some other significant number in the past – 1984, 2001 – and perhaps they'll fade just as those have but while we have them lets live the dream.

And our dream is the 2010 Clivia Congress. This newsletter carries all of the information as arrangements stand at the moment. Things change, but please get your details through to the organizing committee so that they can get things organized! As you will read, if they don't have numbers they cannot commit to arrangements.

Then there is the AGM. Please see that your Club through its representatives gets those items onto the agenda that you would like discussed or addressed. It costs good money to get all of the executive and representatives together so make sure the money is well invested.

I'm paring down on publishing all the Club reports. I've had feedback that the print space is better used – and hence money better spent – on information about Clivia and its personalities and the Clubs are generally tardy in sending in the material anyway.

This issue features some newcomers as contributors in my time as editor, particularly the stunning photos of Wayne Haselau. I really appreciate a spontaneous submission of material. It makes life just that much easier. Willie and Cynthia le Roux are stalwarts. And Bill Morris makes a valued contribution after a long silence. We also hear from Jim Shields as to the correct use of terminology when speaking of our plants. We in the Clivia circle tend to hive off and talk a private dialect. Felicity Weeden takes us to some habitat areas and gives us a peak at some of the growers you may wish to visit at the time of the Congress. Gordon Fraser has also given us some eye-catching material.

While you hold this issue in your hands hold Freda in your hearts. She lost her husband Tinus just before Christmas.

Then there are the members who are suffering the pain of illness. We think in particular of Tino Ferero and the illness of his wife, Marita.

For us all may this be a year to remember – may the glories it hold outweigh the ills.

... and I almost forgot the soccer – may the event make us in the RSA even more proudly South African as we celebrate the country's centenary. &

Clivia greetings

Roger Fisher



ADVERTISEMENTS

Tariffs for advertising in the Clivia Society Newsletter:

Smalls (1 to 6 lines):	R25.00	Full Page:	R250.00
Smalls (7 to 10 lines):	R30.00	A5 separate page insert:	R600.00
Quarter page:	R70.00	A4 separate page insert:	R800.00
Half page:	R125.00		

(You will be sent an account from the treasurer for the appropriate amount.)

EDITOR OF NEWSLETTER ROGER FISHER: PO Box 1039, White River, 1240, Republic of South Africa
&Tel: +27 83 602 7736 &Fax: 086 515 0710 &E-mail: clivianews@cliviasociety.org

PUBLIC RELATIONS OFFICER SAKKIE NEL: PO Box 35235, Menlo Park, 0120

&Tel: +27 12 361-6415 &E-mail: corgas@vodamail.co.za

YEARBOOK EDITORIAL ROGER FISHER: PO Box 1039, White River, 1240, Republic of South Africa

&Tel: +27 83 602 7736&Fax: 086 515 0710 &E-mail: clivianews@cliviasociety.org

&DESIGN & LAYOUT FRÉDA VAN WYK: 082 468 8485 **&PRINTING** CPD Print, Pretoria Tel: 012-342 1978/9

CLIVIA 2010

On behalf of the Clivia Society and the Cape Clivia Club, we invite you to meet with other Clivia enthusiasts at the 5th International Clivia Conference in Cape Town, the oldest city in South Africa. In addition to its historical heritage dating back to 1652; Cape Town is also one of the most beautiful cities in the world. The conference will take place on 21 and 22 September 2010 in the auditorium of the Sanlam Conference Centre in Bellville. Details of the Conference, the names of the speakers and associated tours and events are given at www.miniata.co.za, the website of the Cape Clivia Club. The website is updated regularly.

The theme of the conference is "The heritage of Clivias". The invited speakers include old friends Dr Keith Hammett from New Zealand, Helen Marriott and Ken Smith from Australia, and others from South Africa and elsewhere. The speakers will cover the Clivia species in habitat, Clivias in collections, in modern history, in pre-history – the evolution of the genus from some 33 million years ago, and in the laboratory. I am sure that we will also be given "hot off the press" results of much of the research that is taking place, including research on the inheritance of colour. The Speaker Programme is set out at the end of this article.

The annual Show of the Cape Clivia Club, on 24, 25 and 26 September 2010 will be regarded as a National Clivia Event. The very best of Clivia in flower, including seedlings bred from "Appleblossom" crosses, as well as rare mirabilis hybrids will be on display. In addition to the many plants on show, a wide variety of plants will be offered for sale by top growers. To make things easier for you, the conference and show venues adjoin each other.

One of the highlights of Clivia 2010 will be an auction, to be held at the Conference venue on the evening of 22 September. A selection of 60 or so top Clivias from all over South Africa and elsewhere will be on offer. Closer to the time, all the accepted plants will be illustrated on the website as the catalogue is finalized.

We all want to take better photos of our clivias, so Ian Coates' Photographic Workshop on the morning of Thursday 23 September is sure to be a big attraction. This will be popular, so remember to register early!

Visits have been arranged to the Kirstenbosch Botanical Gardens and to Hermanus, as well as a tour to Mirabilis country. The KZN Club has arranged a pre-Conference tour and, after the Garden Route and Eastern Province Clivia Club Shows, there will be a two-day nobilis habitat tour, arranged by the EPCC. A longer privately-organized Transkei habitat tour takes place from 1 October.

One of the major attractions of every Clivia Conference is the opportunity to meet fellow enthusiasts from other parts of South Africa and overseas. The social programme begins with the opening "Meet and greet" cocktail and registration function at the Conference Venue on Monday evening 20 September. A Conference dinner will take place the following night [to be confirmed]. A light early supper will be served before the Auction on Wednesday evening. Delegates will also have the chance to visit the world-famous Cape Town Waterfront to sample the fare there, to go up Table Mountain by cableway and to see many other attractions of what Sir Francis Drake called "The finest Cape in all the world".

Note that a significant "Early-bird" discount applies for those of you who register early. For your convenience a registration form has been included in this Newsletter. Please register soon!

Accommodation options include Bed & Breakfasts, hotels, as well as some private homes. Book directly by accessing sites listed on the website or by contacting the official Tour Company. Their details are given on the Registration form. As for the 2006 Conference, this is one of the Sure Travel franchises.

As the Chairman of the Clivia Society, Prof. Johan Spies says, "A part of Cape Town sits against the slopes of Table Mountain. Take a good look at the mountain and consider the following fact: there are more different plant species growing on this mountain and its slopes than there are plant species in the whole of the United Kingdom". We trust that while you are here, focussed on Clivias, you will also take time to enjoy the incredible riches of the Cape Floral Kingdom and the other beauties of the Cape. Check www.miniata.co.za for links. &

John van der Linde



CLIVIA SOCIETY MATTERS

Notice to Constituent Clivia Clubs of an Annual General Meeting of the Clivia Society to be held on Saturday 15 May 2010 at the Willows Resort in Port Elizabeth, South Africa

Dear Society Representative/Club Chairperson/Club Secretary

Allow me to share information regarding the AGM of the Clivia Society to be held in Port Elizabeth on Saturday 15 May 2010.

Starting times and venues:

FRIDAY 14TH MAY

- 14h00 onwards Check-in at Resort.
 Note: R100 refundable deposit in respect of losses / damages per unit payable on arrival.
- 18h00 for 19h00 Braai (cash bar will be available)

SATURDAY 15TH MAY

- 09h00 Breakfast
- 10h00 – 12h30 Will arrange shade house visits on request.
- 13h00 Light lunch
- 15h00 Annual General Meeting.
- 18h00 for 19h00 Potjiekos. Wines will be provided by EP (cash bar will be available).

SUNDAY 16TH MAY

- 09h00 Breakfast. Special arrangements to be made for those leaving early.
- 10h00 Check-out time.

You are hereby invited to:

1. Submit written notice of proposals regarding amendments to the constitution
2. Put duly motivated matters on the agenda for the meeting
3. Forward the names and contact details of Club representatives as well as their alternates to the Society secretary. CCC, NCC and EPCC have each three; KZNCC and JCC have each two and NFCC, FSCC, LCC and NZCC have each one representative/s and alternate/s.
4. Nominate members for the Clivia Society Executive Committee.
5. Propose members to serve on sub-committees of the Clivia Society.
Each Club should have at least one member on each committee.
6. Nominate Honorary members by 15/3/10.

You are requested to:

1. Send a short report on your Club activities during 2009/2010
2. Each committee to report on activities/progress made during 2009/2010

Please note and adhere to the critical dates listed in "Important dates 2010 to Clubs" document attached. All correspondence should be forwarded to the Society at one of the following addresses:

Clivia Society, PO Box 74 868, Lynnwood Ridge, 0040
Fax: +27 12 804 8892; Email: Cliviasoc@mweb.co.za

Preliminary Agenda of Clivia Society Annual General Meeting



Date for the AGM: 15 May 2010 @ 15:00

Hosted by Eastern Clivia Club, Port Elizabeth, South Africa

- | | |
|--|--|
| <ol style="list-style-type: none"> 1 Welcome 2 Constituting the meeting 3 Attendance register/Recording of representatives (alternates) for Constituent Clivia Clubs and Clivia Enthusiasts 4 Minutes of the Annual General Meeting held on 16 May 2009 5 Matters arising from the minutes 6 Honorary membership. 7 Clivia Society Conference in 2010 8 Amendments to the constitution. 9 Financial Report: Sakkie Nel 10 Appointment of Auditor 11 Budget for 2011 12 Other reports <ol style="list-style-type: none"> 12.1 Yearbook: Roger fisher 12.2 Newsletter: Roger Fisher 12.3 Research Committee: Johan Spies 12.4 Public Relations: Sakkie Nel 12.5 Registration of genus Clivia: Ken Smith 12.6 Web Site: Gideon Scheepers 12.7 Standards and Judging: Koos Geldenhuys 12.8 Reports from Clubs | <ol style="list-style-type: none"> 12.9 Chairman's report: Johan Spies 13 Election of Office Bearers <ol style="list-style-type: none"> 13.1 Chairperson 13.2 Vice-chairperson 13.3 Treasurer 13.4 Secretary 13.5 Additional member 14 Election/Appointment of members for sub-committees <ol style="list-style-type: none"> 14.1 Yearbook 14.2 Newsletter 14.3 Web Site 14.4 Research 14.5 Registration of genus Clivia 14.6 Public Relations 14.7 Standards and Judging committee 14.8 Other 15 Hosting of Annual General Meeting in 2011 KZNCC 16 Honoraria 17 Closure & <p><i>Dr. Lena van der Merwe</i>
<i>SECRETARY: CLIVIA SOCIETY</i>
<i>27 February 2010</i></p> |
|--|--|

Directions to the Willows Resort

- A By using GPS :- coordinates – South 34° - 2 min 36 sec, East 25° - 36 min 40 sec.
- B Coming on N2 from Cape Town – carry on through N2 bypass to Grahamstown, take off ramp 751B – M4 Settlers way.
See E for further directions.
- C Coming via Graaff Reinet – take N2 off ramp left to Grahamstown at General Tyre Factory – carry on and take off ramp 751B – M4 Settlers way.
See E for further directions.
- D Coming via Cradock or East London on to N2 – take off ramp 751B – M4 Settlers way
See E for further directions.
- E Once on Settlers way carry on with Humewood Road along Beach Road (City's main beach front) stay on this road until it becomes Marine Drive. A journey of approximately 12 km further along Marine Drive will get you to the Willows Resort. Look out for signpost on left.

Minutes of the Clivia Society Annual General Meeting [for approval]



16 May 2009, Stone Cottage, Cape Town, South Africa

1. Welcome

The chairperson, Johan Spies, extended a special welcome to John Winter, past Chairman and honorary member, Tino Ferero, past chairman and honorary member, Chris Vlok, past chairman and Oom Pat (Mr. Pat Gore), who has yet to miss an AGM of the Clivia Society. He also thanked Mickey Hoctor and the Cape Clivia Club for hosting the AGM, and the get together this evening. He explained that all were free to ask questions, but that only official delegates were entitled to vote. Johan also expressed his sincere thanks to all who had travelled far to attend the meeting despite of the wet and stormy weather. All the documents were distributed in time and would be considered as read. The languages of the meeting are Afrikaans and English.

2. Constituting the meeting

The following proxies were recorded: Ken Smith (Proxy to Lena v d Merwe) and if the meeting approved the application of the Lowveld Interest Group to become a constituent Clivia Club of the Clivia Society, Roger Fisher has the proxy of Paul Kloeck. The members attending the meeting constituted a quorum and the chairman declared the meeting duly constituted (proposed by John van der Linde and seconded by Peter Lambert).

3. Attendance register

Present:

Ex Officio: Johan Spies (chairman) and Christo Topham, (Vice Chairman)

Cape Clivia Club: John van der Linde, Dave Garriock, and Claude Felbert

Eastern Province Clivia Club: Johan Basson,

Andre Calitz and Willie le Roux

Northern Clivia Club: Tino Ferero,

Peter Lambert and Lena v/d Merwe

KwaZulu-Natal: Brian Tarr and

Francois van Rooyen

Garden Route Clivia Club: Piet Theron

Free State Clivia Club:

Hennie van der Mescht

Joburg Clivia Club: Glynn Middlewick and Maylene Turner

Northern Free State: Louis Chadinha

Honorary Members: John Winter and

Tino Ferero.

Apologies: Ken Smith, Aart van Voorst,

Jim Shields and Jaco Nel, (representatives

for associate members), Mick Dower and

Connie & James Abel, honorary members.

An attendance register was circulated to record others attending (apologies) the meeting. A total of 47 members and Club members attended the meeting.

Recording of representatives (alternates) for Constituent Clivia Clubs and Clivia Enthusiasts.

The secretary read out the names of the representatives and alternates of clubs received. Several Clubs did not nominate alternates.

4. Minutes of the Annual General Meeting held on 24 May 2008

Point 13.1 should read: "*Yearbook 9 of 2007*".

The minutes of the Annual General Meeting held on 24 May 2008 were accepted as a true reflection of the meeting (proposed by Koos Geldenhuys and seconded by Willie le Roux).

5. Matters arising from the minutes

None.

Application for Club status by the Lowveld Clivia Interest Group

Peter Lambert, chairman of NCC, put forward the application of the Lowveld Clivia Interest Group to become a constituent Club of the Clivia Society. The meeting approved the application (proposed by Willie le Roux and seconded by Sakkie Nel). The Lowveld Clivia Club therefore becomes the tenth constituent Clivia Club of the Clivia Society.

7. Honorary membership

The Northern Clivia Club nominated and the Eastern Province Clivia Club seconded the nomination of Chris Vlok and Bossie de Kock (postuum) as honorary members. They were unanimously elected as honorary members of the Clivia Society by the meeting. Peter Lambert handed the honorary membership certificate to Chris who accepted the honour bestowed on him and Bossie and he gave a brief overview of his term serving the Clivia Society in various positions.

8. Clivia Society Conference in 2010

The chairman announced that in the meeting, that took place before the AGM, it was decided

- Date: 21 – 22 September 2010.
- Registration: The evening of 20 September 2010
- Place: Sanlam, Centre Bellville
- Theme: Heritage Clivia
- Auction of sought after plants and other items: 20 September 2010
- Cape Clivia Show: 24 – 26 September 2010

9. Amendments to the constitution

The requirements for the election of persons for the position of secretary and treasurer should be revised. A treasurer needs to have knowledge of accounting to be effective. The meeting decided that the EXCO should look into this and the revision may then be done by e-mail on a round-robin basis (proposed by Louis Chadinha and seconded by John Roderick).

10. Affiliation of the Chinese Clivia Society

Individual persons may join the Clivia Society, but there exists a language barrier when clubs join. If enough individuals joined they may use a representative to represent them.

11. Registration of the genus Clivia: "Conduct code"

Members should not regard seed as the same as the mother plant and seed is also not a cultivar. Only offsets of a plant can be regarded as belonging to the same clone. There should be more than one plant available of the same clone for regis-

tration of a name.

12. "Policeman" organisations for trade in Clivias



Such an organization is not necessary in the RSA. It is the responsibility of a buyer to ensure that he gets what he intends buying. An unscrupulous person quickly builds up a bad name and buyers avoid them.

13. Financial Report

The chairman thanked those persons who stepped in and assist Bossie de Kock's family to sort out the possessions of the Clivia Society at his home. Sakkie Nel acted as caretaker treasurer in the interim. Signing powers were changed to Christo, Sakkie and Lena on the bank accounts of the Society.

13.1 Treasurer's Report

This report was compiled by Sakkie with the assistance of Lena.

Point 6 of the report proposes an increase of membership fees from R 100-00 to R 120-00 for RSA membership and R 160-00 to R 200-00 for overseas membership. This proposal was accepted as proposed by John van der Linde and seconded by Peter Lambert.

Point 7 of the report proposes transferring of funds to:

Research Fund	R 6 675.00 and
Register for	
Cultivars Fund	5 445.00.

This proposal was accepted as proposed by Tino Ferrero and seconded by Peter Lambert.

The treasurer's report was accepted with gratitude as proposed by Jurie Swart and seconded by Koos Geldenhuys.

13.2 Audited Financial Statements

The Auditor's Reports were unanimously accepted as proposed by Louis Chadinha and seconded by Claude Felbert.

13.3 Appointment of Auditor

The appointment of an auditor was left to the executive committee to appoint.

14. Budget for 2010

Sakkie Nel, with Lena's assistance tabled a budget for 2010. Sakkie pointed out that we anticipate an income from the auction (R 20 000) and conference (R 2 000) next year and provision is made for the publication on judging and standards. The meeting approved the proposed budget for 2010 as proposed by Andre Calitz and seconded by Koos Geldenhuys.

15. Other reports

15.1 Yearbook: Roger Fisher

The chairman congratulated the editors on the excellent publication.

15.2 Newsletter: Roger Fisher

Thanks to Roger Fisher. Please members send in news and articles.

The Yearbook and Newsletter reports were accepted as proposed by Sakkie Nel and Willie le Roux.

15.3 Research Committee: Johan Spies

Johan Spies gave an excellent paper on the research done at the University of the Orange Free State on Clivia. He mentioned that, thanks to the donations from the Northern Clivia Club (R 40 000) and the Clivia Society (R 60 000) over two years they got state funding (R 150 000) to pursue their research on the genetics of Clivia, which proved to be far more complex than anticipated. Clivia seems to be an ancient tetraploid plant and crossings between the species had happen in nature. He is of the opinion the out of season flowering of these crossings do take place but goes by unnoticed as we do not visit the habitat out of season.

15.4 Public Relations: Sakkie Nel

Chris Vlok enquired whether the plant named in honour of Oprah had been given to her yet. He suggested that one be planted at her school here in the RSA. This report was accepted as proposed by Peter Lambert and Roger Fisher.

15.5 Registration of genus Clivia: K Smith



This report was accepted as proposed by Sakkie Nel and Willie le Roux

15.6 Web Site

None

15.7 Standards and Judging: K Geldenhuys

Koos Geldenhuys reported that the judges of the NCC had several meetings. They are busy compiling a guide. The idea is a loose-leaf file so that updating of the document will be easy done by just replacing a leaf with a new one. They are busy taking photos to illustrate this guide. Piet Theron asked for a training course in adjudication for the smaller Clubs. This guide will not be prescriptive, each club may use what they want in the guide. The NCC has compiled an adjudicating manual in which they do point out what have to be look for when judging a plant. A request was made for making this also available on DVD. Willie le Roux wished Koos well with this endeavour. The chairman thanked Koos.

The chairman expressed his gratitude to all committees for all the work done by them.

15.8 Reports from Clubs

The chairman expressed a word of thanks to all Clubs for the excellent work done in their region in promoting Clivia. Clubs are the heartbeat of the Clivia Society.

15.9 Chairman's report: Johan Spies

Christo Topham (vice chairman) took the chair while Johan Spies addressed the meeting. Johan said the death of Bossie was a great loss to the Clivia fraternity. He asked for a moment of silence in honour of Bossie. He thanked Lena for all her efforts in obtaining all documents and information from his family and ensuring continuity in the

financial matters during Bossie's sickness and after his death. Johan also thanked his team for their cooperation and hard work. The chairman's report was accepted as proposed by John van der Linde and Sakkie Nel.

16 Election of Office Bearers

16.1 Chairperson

Chairman. Johan Spies was the only nominee as chairman and therefore unanimously elected as chairman. He thanked the meeting for the confidence put in him.

16.2 Vice-chairperson

Vice Chairman. Christo Topham was the only nomination as vice Chairman and unanimously elected.

16.3 Treasurer

Neil Nathan and Sakkie Nel was nominated. An election committee was appointed and voting took place by ballot paper. Sakkie Nel was duly elected as treasurer.

16.4 Secretary

The Chairman explained to the meeting the position of Secretary (Lena van der Merwe) need, according to the Constitution, a unanimous vote from the meeting to be re-elected.

Lena van der Merwe was the only nomination and unanimously elected.

16.5 Additional member

As the elected treasurer is not a representative of a Club, an additional member has to be elected on the executive committee - that is two additional members had to be elected. Ken Smith and Sakkie Nel were both nominated and elected on the executive committee.

17. Election/Appointment of members for sub-committees

17.1 Yearbook

Roger Fisher, R Dixon and C. Felbert

17.2 Newsletter

R Fisher and Willie le Roux (EPCC) as additional member. Each club should nominate a member on this committee.

17.3 Web Site

Gideon Scheepers (JCC) and D. Botha (EPCC)

17.4 Research

Johan Spies as convenor and John Roderick (EPCC)

17.5 Registration of genus Clivia

Ken Smith and Wimpie Maass (EPCC) and Joubert van Wyk, (NCC). Each club should nominate a member on this committee

17.6 Public Relations

Sakkie Nel and Gideon Botha (EPCC member). Sakkie requested that each Club should put a name forward that will act as the contact person in that club.

17.7 Standards and Judging committee

Koos Geldenhuys, A Calitz (EPCC) Hennie van der Mescht and Bill de Swart. Each club should nominate a member on this committee.

17.8 Other

None

18 Hosting of Annual General Meeting in 2010.

The meeting decided that EPCC will host the AGM in 2010 and KZNCC will act as the host for 2011.

19 Honoraria

John van der Linde proposed and Peter Lambert seconded that the secretary receive a honorarium of R 3 000-00 as well as a bonus of R 3 000-00 for services rendered over the past 7 years.

20 Closure

The meeting was declared closed at 16:35. The Chairman thanked the meeting for the pleasant positive spirit and wished delegates a safe drive back home. He apologized for not attending the social afterwards as he and two of his students are off to collect *C mirabilis* samples in the North Cape.

Claude Felbert made apology for Ian Brown and Toy Jennings who were unable to attend the meeting. &



LETTERS

Some follow up on Jason's Garden of Remembrance

Hi Roger,

Herewith a few of the e-mails I have received.]

We have started a blog for this project: www.jasonsmemorygarden.za.net. Please visit.

Kind Regards

Carrie Kruger, South Africa

Hi

Here is a pic of Marco Pretorius.

Date of birth 31/03/1999

Interest: Clivias; Motorbikes; Any thing that crawls and flies

He is in Van Riebeeck Park Primary in Kempton park GR4. &

Regards

Daniel Pretorius



Marco Pretorius

I have a gardening group at my school that I'd love to introduce to Clivia and show them how to germinate and grow this wonderful plant. Not sure how many seeds you can send but I'd take whatever you can give. My students will love them. Thanks. &

Ron Keeton, 307 Sierra Court, Glen Carbon, IL 62034, United States

Merry Christmas Carrie,

Yes, the seeds did arrive and I was so surprised at how many, thank you, and I'm happy to report that nearly 100 percent of them have germinated and are well on their way to becoming beautiful seedlings. I have taken some pictures of them after we took them out of the moss we germinate in and then a picture of a few planted out into their communal cups. I'll also take a picture and send it to you of the group of kids that are participating in our little kid Clivia Club) I teach at a grade school so these kids range in age from 9 to 11... let me attach the pictures of the seeds now. &

Ron Keeton,

Cold and snowy Illinois



My name is Jordan Williams, my Dad Hugh Williams said I should write in and ask if it were ok if I could get some free seeds. I am 13 and for the last few months have been collecting the seeds from my Dads Clivias (the orange ones he doesn't want) He says I can grow them on and see how I do. I love working with plants and am always in the nursery helping my Dad, I think Clivias are an amazing plant and so perfect for here in Australia. I think what you have done in making a Garden of Remembrance for your son is a wonderful idea and I'm sure he looks down on it with happiness. I would dearly love to receive some of your seeds and grow them on for my own collection that I am starting. &

Regards

Jordan Williams

Szymon Baggs.



My name is Szymon Baggs. I am 16 years old, and in 11th grade of Middleburg Sr. High School. I live with my mom in Middleburg, Florida. My dad died 5 years ago of blood cancer.

Mom has been sick for the past 3 years. She has Chronic Fatigue Syndrome. She had to stop working last year because of her condition. She is not a person who can sit doing nothing so she started growing Clivias just for our pleasure, and I have been helping her with them.

I know it sounds funny - I am a boy and helping mom with plants. I like it and wish their flowers stay pretty for longer than they do. I would like to grow a Clivia that would make my mom happy, and that's why I am writing to you Madam hoping you let me to have some of your seeds. &

*Wish you the best,
Szymon*



I teach Grade 6 at Holy Childhood School here in Eshowe, KZN. Last year a local farmer gave us some *Clivia gardenii* 'bulbs', which we planted. This year a local Clivia enthusiast, Mrs Colenbrander, gave us some *Clivia miniata* (orange), which we have planted.

I am so proud of my class - they remind me to let them go and water them every day. The children won't see the flowers during their years at school - nonetheless, they are so interested, enthusiastic and keen! I bought the 'Gardener' magazine for the Clivia article. The children in my class have read

it with great interest. I set their English comprehension exam on Clivia, and we have devoted a page of our school magazine to Clivia. After all, some Clivia are indigenous to Eshowe, we understand! If you have any seeds to spare, we would plant them and tend to them with great care. &

Kind Regards

Anne Horsfield, Private Bag X509, Eshowe



Misconceptions about flower colour in clivias

In the article by Alick McLeman in the Clivia Newsletter of July - December 2009 (pp.18-27), there are a number of serious factual errors. The main one is in his modified table of "*Clivia Flower Pigmentation Analysis*" which is reproduced four times in that article.

The original figures come from the analysis table in Keith Hammett's article in the *Clivia Yearbook No.6* (pp.39 - 49), on p.42.

These results were obtained by Ken Markham, a renowned pigment chemist and should be as reliable as any produced anywhere.

However, in the McLeman article they were abbreviated (without any change to the figures) from fifteen individual plants to single examples of colour types, namely dark red, orange, pastel, Chubb Peach, dark yellow and near white. In the original Hammett article there were two columns of results, one for carotenoids and one for anthocyanins. To these, another column was added with the heading "ratio" - which was simply comparing the amount of carotenoid to the amount of anthocyanin. This gives figures which suggest that carotenoid pigments (yellow) exceed anthocyanin pigments (red/orange) by a ratio of 5:1 to 68:1 - depending on the colour of the flower.

I have cut a number of cross sections of Clivia petals with very similar results to the cross section illustrated in the *Clivia Yearbook No.5*

(p.23 - 31) by Koopowitz et al entitled "*Color Pigments in Clivia*".


These analyses were presented in graphical form, unlike Markham's results which were presented in figures, but were also done by a renowned pigment chemist Rob Griesbach, so are similarly reliable to Markham's results.

I decided early in 2009 to compare the two sets of results to see how well (if at all) they agreed and whether examined together they might yield more

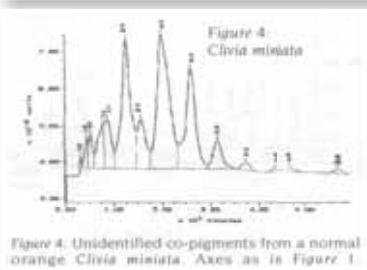
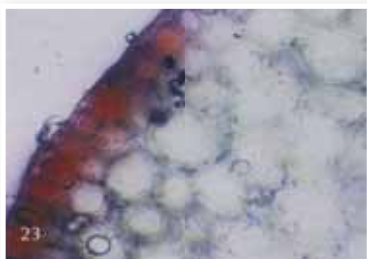
information than when examined separately. This was not an easy task, as I found that they had been done by different methods, in different laboratories, by different chemists (as mentioned earlier), presented in different forms, used different nomenclature and probably had different funding.

Returning to the cross section in Koopowitz's article to actually see the pigments in the petal (*Clivia Yearbook No.5* (fig. 23 on p. 25) reproduced above), it is perfectly obvious that the orange red pigment dominates (in the epidermal layer of cells) and that no yellow pigment is visible. In fact, the internal tissue is quite white except for some slight suggestion of green which Koopowitz states, under the photo, are green chloroplasts. I suggest that the magnification is around 200-400 times and this may be why no yellow is visible, but there is no way that there can be 5 to 68 times as much yellow pigment present as red/orange pigment.

CLIVIA FLOWER PIGMENTATION ANALYSIS			
Colour Type	Carotenoids	Anthocyanins	Ratio
Dark Red	4.2	1.8	2.3
Orange	7.2	2.2	3.3
Pastel	4.2	2.2	2.0
Clivia's Peach	4.2	2.2	2.0
Dark Yellow	4.2	2.2	2.0
Near White	4.2	2.2	2.0



Species/hybrid	Selection	Colour Type	* Carotenoids	* Anthocyanins	Two Dimensional Paper chromatography ***						
					Anthocyan-1 (P-mono glyc)	Anthocyan-2 (P-di glyc)	Anthocyan-3 (D-Mono glyc)	HC-1	HC-2	HC-3	Flavones/ols
<i>C. miniata</i>	Nakamura Crimson	Dark Red	8.2	1.51	+++	+++	++	p	-	-	-
<i>C. miniata</i> x <i>C. nobilis</i> ?	Nakamura Bronze	Bronze	5.6	0.58	+++	+++	-	p	-	-	-
<i>C. miniata</i> var. <i>Grandiflora</i> (6c)	8319/04	Orange	2.9	1.12	+++	++	-	p	-	-	-
<i>C. miniata</i>	Long standing NZ accession	Pale Orange	3.2	0.35	+	+	w	p	p	-	-
<i>C. miniata</i>	'Peach Melba'	Pastel	4.2	0.21	+	+	+	p	p	-	-
<i>C. miniata</i>	Tony's Pastel	Pale Pastel	2.8	0.99	+	+	-	p	p	p	-
<i>C. miniata</i>	'Chubb Peach'	Peach	4.8	0.37	w	-	-	p	p	-	-
<i>C. miniata</i>	'Alick's Peach'	Peach	3.8	0.36	-	-	-	p	p	-	-
<i>C. miniata</i>	'Bly' [Group 1]	Deep Yellow	9.6	-	-	-	-	p	p	p	-
<i>C. miniata</i>	8160/04 [Group 1]	Pale Yellow	1.4	-	-	-	-	p	p	-	-
<i>C. miniata</i>	'Natal Yellow' [Group 11]	Mid Yellow	7.2	-	-	-	-	p	p	p	-
<i>C. nobilis</i>	<i>C. nobilis</i>	Pink	2.8	0.87	w	++	-	p	-	-	-
<i>C. caulescens</i>	<i>C. caulescens</i>	Orange	1.4	0.09	w	-	-	p	-	-	-
<i>C. caulescens</i> x <i>C. miniata</i>	864/04	Pale Orange	2.3	0.25	+	++	w	p	p	p	-
<i>C. miniata</i> x <i>C. nobilis</i> ?	'Armani'	Orange	2.8	0.33	++	-	-	p	p	p	-



So what is wrong?

I went back to Markham's original table to check what were the units that the figures represented. I had looked at this table many times and never noticed the units. In all the other columns Markham did not give figures - only 3, 2 or 1 pluses or p (present) or - (absent).

Finally I noticed in the top left hand corner of the table "Notes" (and I reverse the order here, compared to the original).

"Anthocyanins expressed as pelargonidin - 3 - glucoside equivalents in mg/g of live petal. Carotenoids expressed as Beta carotene equivalents in mg/g of live petal X 1000" Translating this for Clivia growers this reads Anthocyanins are expressed as milligrams / gram of live petals Carotenoids are expressed as micrograms / gram of live petals.

Again, for Clivia growers, 1 milligram is one thousandth of a gram and 1 microgram is 1 millionth of a gram - so that when comparing the ratio of two numbers one must compare like with like and so here we must use the same units. Therefore the numbers used in the table in the

carotenoid column – instead of being 8.2, 3.2, 4.2, 4.8, 9.2 and 1.4 should be 0.0082, 0.0032, 0.0042, 0.0048, 0.0092 and 0.0014.

Of course, there is much more anthocyanin pigment in each flower than carotenoid pigment and the ratios become 196, 109, 50, 14.6 (anthocyanin over carotenoid). Anyone interested in simple maths can see that the relationship of 5.1 and 196 or 20 and 50 is 1000.

The next major error in this article is the statement on p.18, "As illustrated in the table below we have

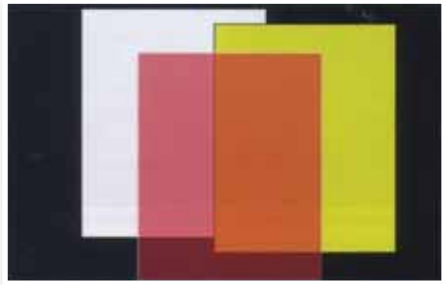
two pigments to work with, red anthocyanins and yellow carotenoids, red pigments in the surface cells and the yellow in the fleshy cells behind" (internal cells). This is incorrect.

Firstly, Koopowitz states that the two peaks on Griesbach's HPLC graphs (p-3-g and p-3-r), pelargonidin -3 - glucoside is orange and pelargonidin-3-rutinoside is red - and so what looks like a red colour in the epidermal layer (in fig.23 earlier) is actually a mixture of a red anthocyanin and an orange anthocyanin, while he also states in his book "Clivias" p.136, Japanese researchers had analysed the carotenoids in two Clivias and had found seven different ones. So in Clivias there have so far been found two anthocyanins and possibly a third (of different colours) and seven carotenoids (luckily, mainly yellow), so instead of two "pigments to work with" there are at least three and possibly more. Also, the main other factors (chemical) that can affect colour markedly are the co-pigments which are present and Griesbach's co-pigment HPLC graph (fig.4 p.29) showed fourteen peaks, not all of which may be co-pigments as generally each anthocyanin has its own co-pigment and the graph shows three major peaks so the others may be other extracted chemicals.

A further thing that the petal section shows is that the colour of the flower is not "particulate" or not like a dot matrix or pixel. Hammett, in his article in *Year Book No. 8* first made this "particulate" [comprised of grains or particles - Ed] statement and McLemman repeats it. The section clearly shows that the colour in the epidermis is continuous, not particulate and the chloroplasts are so tiny and so few (generally 20 - 50 per cell, except in leaf cells) that they could never join up to appear solid to the eye. Perhaps a section through a green throat portion of the flower might show sufficient chloroplasts to give green to the eye, but even at the 200 - 400 magnification, the anthocyanin pigments are not particulate because the vacuole occupies most of each surface cell and so they appear continuous because the cell walls are so thin they cannot be seen to separate them.

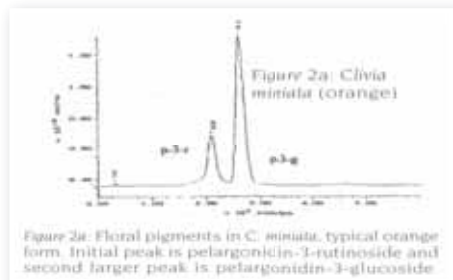
This section (and my own appeared the same) is critical of Rudo Lotter's fig.5 in *Year Book No. 9* (p.64 - 69) where he uses transparent sheets

of paper or plastic to show that red over yellow gives orange.



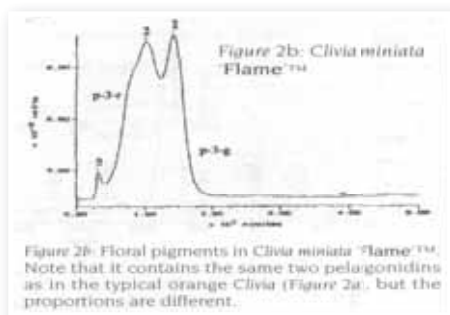
Although the white sheet under both dilutes the red to pink it has no effect on the yellow. This suggests that the red sheet is transparent but that the yellow sheet is opaque. Either way, the two "tissues" are different and certainly the section, my own sections, and the analyses confirm the yellow pigment is so dilute it cannot look as it has been represented in that fig.5. This figure was based on Wessel Lotter's epidermal peel in his *Year Book No.1* article where the peel looked reddish and the underlying tissue looked yellow (but I doubt anything like as dark yellow as in fig.5). That was in 1998 - at least five years before Koopowitz's article showed that the colour was due to a mixture of two anthocyanin pigments.

Also, Koopowitz's fig.2a (p.29)



The figure clearly shows that an orange Clivia clearly has a marked excess of orange p-3-g over red p-3-r, while fig.2b.

A red Clivia ('Flame') shows much more red p-3-r than orange p-3-g (by area under the peaks) thus showing the difference between orange and red flowers is due to the ratio of p-3-g to p-3-r and has nothing to do with the underlying



yellow. It is only in peach *Clivias* that the orange gets low enough that the underlying yellow (of low concentration) beginning to show through. With more anthocyanin in the outer (top) layer it is too dark to see any internal colour. This is why I cannot understand why Hammett recently stated to the Enthusiasts' Group (16th October 2009) "The perception of orange in *Clivia* is the result of viewing background carotenoid

through an aqueous film of red anthocyanin. No orange pigment per se is involved". His own paper with Markham's analyses shows two anthocyanin pigments, one of which (Anthocyanin 1) is almost certainly Koopowitz's orange p-3-g while Anthocyanin 2 is most likely Koopowitz's p-3-r. Anthocyanin 3 may be the smaller (minor) peak on Koopowitz's graph 2b just before peak p-3-r. As well, Markham's analyses of the orange *Clivia* in the table ("long standing N.Z. accession") with a 109 ratio of anthocyanin over carotenoid cannot be described as a "haze" of anthocyanin over the underlying yellow unless he also failed to see the over inflated ratio implied by the figures in the carotenoid column.

If *Clivia* breeders expect to use the pigments present and the combinations to predict their colours they must use the accurate situation determined by chemical analyses. &

Bill Morris, 23 January 2010

READER'S OPINIONS

When is 'Clivia' not a Clivia?! - clive, clivis, Clivia...

Anyone surfing the web with *Clivia* in mind will occasionally encounter other things called 'Clivia' that are not the plants of our fancy. I thought it would be fun to catalogue these in a series of short articles.

As a pupil, I frequently heard some of my fellow pupils using the term "x?@#%*+! Latin". ('x?@#%*+!', as used in comics, is called a gawlix - defined as a sequence of typographical symbols used to represent a non-specific, profane word or phrase). Latin didn't worry me much; my third language was French, conveniently structured much like English.

In my much later life however, I found a need to read botanical Latin. Whereas in the age of my youth, a schoolboy may have had the time and patience to learn a language with a completely foreign structure, it doesn't go down well now with an old grouch like me. I now use the term "x?@#%*+! Latin" with alacrity. I mean, please explain 'case' to me - I only know 'nut case' and 'pathetic case' ... and what of declensions, persons, gender and mood.

Thus when I inform you that 'Clivia' is a 3rd declension Latin noun as it is rendered in either nominative, vocative or accusative cases; is plural and neuter; is based upon the root 'clive, clivis'; and that it means 'slope' or 'incline'; I can elaborate on this subject absolutely no further. Apparently 'Clivia' can also be used as an adjective, under the same grammatical conditions, and means 'sloping', 'steep' or 'inclined'. Both uses are recorded as being 'uncommon'. So basically, when you encounter the word 'Clivia' amidst some ancient piece of Latin, the chances are that you will not find anything there that will aid you in your studies of our beloved clivias.

An English word utilising this same root is 'declivity' which means 'a downward slope' and has as a synonym 'declension', one definition of the latter being 'a downward slope' - which all goes to explain why when I start working with declensions in "x?@#%*+! Latin", I find myself on a 'declivity'. &

Greig Russell

HABITAT CLIVIA

What I learned from my trip into Clivia Habitat

Bearing in mind that I have spent many happy hours climbing the Tzitzikama coastal cliffs, exploring the flora and picnicking in the forests, this was a delightful journey back into the past but with the added bonus of seeing *Clivia* growing and blooming in their natural habitat.

I had the good fortune to be able to go to three different colonies in as many days. We started at Lalapanzi, a site near East London. Although incredibly drought-stricken the bush was green and the grass high. The river bed was nearly bone dry, which provided a convenient solid rock roadway through this jungle of tall trees and palms.

The trees were dotted with indigenous orchids, many of which were attached to dry and broken branches - doomed I suppose, by nature. The floor of the forest was basically big dolomitic rocks, between and on which the *Clivia* grew. What an amazing sight. *Clivias* in full bloom wherever you looked, on the floor of the forest, growing on the big smooth rocks, up the steep rocky mountainside and even on the river banks.

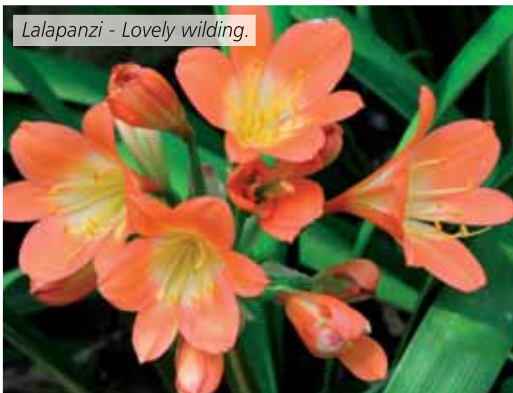
Here also were *Clivia nobilis* in various shades and some with a particularly wide median stripe.



Andy Forbes Harding, Felicity Weeden & Wayne Haselau.



Lalapanzi - Dry river bed.



Lalapanzi - Lovely wilding.



Lalapanzi - *Clivia* Seedlings in the wild.



Lalapanzi C. nobilis & C. miniata growing side by side.



Mzamba - Clivia growing in forest detritus in a cleft.

Streptocarpus, Catstail Ferns, an indigenous form of Birds Nest Fern, Maiden Hair Ferns and Gasterias were all there and all either just hanging on or trying to bloom, despite the harsh drought.

The next expedition was down the mountain at Umtanvuna. Arriving very late in the afternoon and with a heavy cloud cover, we made a dash for the rather steep but well defined stone path down the mountainside.

Majestic trees were the order of the day and once again, the Clivia gracefully growing on and around the rocks. These were rather larger plants with broader leaves than we had seen before. The flowers were also a lot bigger, but generally orange and a fairly spidery form. Nevertheless, it was a magical experience and I would like to have spent more time there in bright light conditions. As it was, we had to scoot back up

the mountain when a steady drizzle developed, arriving very breathless and wet at the car.

The next morning we drove to a rather remote spot in order to go down to the Mzamba population. After a few minutes walk we arrived at a local residents compound, "Umfundisi" who accompanied us into the gorge. It was a fairly short walk to the steep descent down into Clivia Country. The view was, to say the least, magnificent.

The climb down was quite an interesting one as there were spots where the ledge that had to be negotiated was so narrow it could not accommodate a fairly slim body and a medium size camera! The options were: get smaller or fly into infinity down the cliff face!

Arriving at the Clivia site was a near religious experience. Once again we were faced with large dolomite boulders. Here were orange Clivias of

all shapes and sizes, each different form in a small colony of its own. Then the most amazing reds came into view as well as wonderful pastels or pinks. These plants were very large, with enormous blooms - quite unbelievable! Here were plants in the wild in colours we are mostly still trying to achieve. To crown it all, we found a fine variegated specimen as well as fairly short broad leaf specimens with rounded tips. Amazing stuff, all obviously hybridizing there in the forest.

The terrain was very difficult to negotiate because of the big

Umtanvuna - Steep rockfaces.





Umtanvuna - Steep rockfaces.



*Mzamba
Magnificent
red.*

boulders, monkey ropes, decaying tree trunks and the usual forest debris of fallen branches, dry leaves etc. It was also drizzling, making the lichen covered rocks extremely slippery.

It was a long-time dream come true and an altogether excellent experience.

My observations are as follows:

1. There is a heavy infestation of gall midge fly (as I know it) in the first two locations and rather less at Mzamba. This was evidenced by destroyed umbels with secondary fungal infection.
2. There were no seed anywhere. Apparently they are being gathered during April by persons unknown.
3. The multi collectors had been there before us and there were piles of chopped and uncollected plants lying around.

That was the sad/ bad bit. The interesting data follows:

1. The plants were growing on solid massive boulders, with only a little leaf litter around the roots. These plants were solidly attached to the rocks.
2. Some of the plants were literally hanging in the air between boulders, with fallen leaves loosely distributed over the roots. It was possible to lift these plants up and down without disturbing them. Obviously some root tips were buried under the rocks.
3. Interesting to note that the plants must be very old as many of the rhizomes were no longer connected.
4. We also found a few small colonies of seedlings growing in only a very little leaf litter on top of large rocks. It would be



Red spider.

interesting to know how old they were. At the time they all only had a single leaf.

So what I deduced was that Clivia don't need much manure. They grow in leaf litter and forest detritus with plenty of access to dolomitic rocks. The drainage is more than perfect because they grow in very steep positions and the rain mainly just washes over the roots. With the kind of misty rain that was occurring while we were there, the humus and dried leaves probably soak up a fair amount of moisture, which would be available to the Clivia, but the material lying around the plants was very loose, so there could not be any kind of water-logging.

It seems to me that less bark and more leaf-mould and compost should perhaps be the basis of the potting mix for the Clivia. After all there is no food value in the bark, although it provides drainage.

Given the opportunity I would definitely do it all again! &

Felicity Weeder.

Overberg Interest Group

Notes on recent *Clivia* Pollination observations in the habitat

Clivia enthusiasts have known or speculated for a long time that certain species of swallowtail butterflies pollinate *Clivia miniata*.

The Southernmost known *Clivia miniata* colonies occur in the Southern valleys of the Kei River catchment very close to my home. *C. nobilis* are common in the area and in some areas both species overlap. In these areas hybrid swarms have developed and the variation in the *Clivia miniata* is astounding especially with regard to colour. The obvious question is how does pollen get from a *miniata* flower to a *nobilis* flower and vice versa. *Clivia miniata* are butterfly pollinated and *C. nobilis* are pollinated by sunbirds so there had to be another pollen vector. Based on this hypothesis I have spent many hours observing plants both in the wild and in collections in an effort to find out what was responsible. Recently my patience was rewarded and I have discovered that the task of wild *Clivia* interspecific pollination seemingly goes almost exclusively to small bees in the Family Anthophoridae.

These small bees actively collect pollen and or nectar from both *Clivia miniata* and *Clivia nobilis* and have been observed and photographed on plants of both species in my collection and in the wild. On occasions I have observed an individual bee collect pollen from a *Clivia nobilis* umbel and then with pollen sacs loaded fly directly to a nearby flowering *C. miniata*. Recently while visiting a locality on the Qora River a bee arrived on a flower that was already occupied. A fight ensued and the beetle was unceremoniously evicted. What is really interesting is not only that the bee seemed to be territorially protecting the

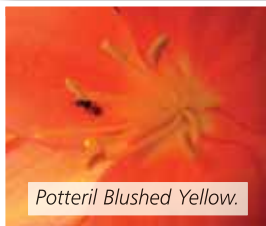
flower but that it stayed guarding the flower for some time after the incident.

There are undoubtedly highly complex relationships between *Clivias* and their environment/pollinators. This is conclusive proof that such behaviour takes place in the wild and that these small secondary pollinators are almost solely responsible for creating so much of the fabulous wild *Clivia* genetic diversity we take so much for granted. For identification purposes I recently began collecting these bees from wild habitat and have found them to be very widespread in the Eastern Cape.

Recent observations in a number of these same localities have been most interesting and some new discoveries with regard to butterfly pollination of *Clivia miniata* have come to light. For a number of years large papilionid butterflies,

Papilio dardanus (Mocca Swallowtail) and *P. orchidicephalus* (Giant Swallowtail) have been regular visitors to my garden in the summer months and if any *C. miniata* are in flower, specimens of both species ardently seek nectar from these flowers. Surprisingly a sister species *Papilio nireus* (Green Banded Swallowtail) seem to show little if any interest in the flowers of *C. miniata*.

Recently I have observed and photographed *P. dardanus* working *Clivia miniata* flowers locally and in wild *Clivia* habitat. The larger swallowtail butterflies seem to utilize a different feeding/pollination strategy. They generally visit only one or two flowers in a single head before moving quite a distance and at speed to the next group of flowers where the same pattern is repeated. I believe this feeding strategy has been adopted as anti-predation measure as bird



Potteril Blushed Yellow.



Potteril Blushed Yellow.

predation plays a major factor in the survival of these species. The tails of these butterflies have evolved for just this reason (as false antennae) and it is surprising how few adults are on the wing with these tails (plumage) intact.

While investigating a local *C. miniata* colony last year I was surprised to notice individuals of a small white butterfly the brown veined white, *Belenois aurota* family Pieridae visiting *C. miniata* flowers. They seemed to remain very active for some time in a specific area visiting individual flowers within a single head and then moving to others nearby. Interestingly as one of these butterflies approaches a flower they literally close their wings and drop into it passing through the reproductive organs in a virtual flurry of pollen. The feeding strategy with these smaller species is unusual in that they literally disappear into the individual flowers and remain hidden inside these individual flowers for a considerable time while feeding.

It is extremely difficult to photograph these individual butterflies, as they are like most butterflies extremely fast and wary on the wing and the Clivia in these localities are normally

growing on rocky boulders and scree slopes. Footing is treacherous at the best of times so chasing butterflies in these Clivia colonies, with camera in hand is a tricky proposition indeed. I have however succeeded in getting a few excellent photos of this behavior to date.

Utilising a spread of different pollinators not only maximizes the chance of successful pollination in nature but it also guards against the possibility of extinction faced by some many highly evolved plants with only one pollinator (e.g. orchids) as would the ability to self. By using pollinators such as these both *C. nobilis* and *C. miniata* ensure a free flow of genes between each other thereby maximising the chance of survival should a change in environmental conditions occur. This change may favour one species or the other or alternatively their pollinator(s) e.g. *C. nobilis* would adapt better to bright light and drier conditions, whereas *C. miniata* would do better under a wetter, poorer light regime. As a botanist friend so eloquently put it, evolution is happening around us all the time and so it is with our favorite subjects, the Clivia. &

Wayne Haselau



CLIVIA 2010 PROGRAMME



21 September

Session 1: Chairperson CCC

09:00 - 09:15 Welcome (CCC)

09:15 - 09:30 Opening (CS)

09:30 - 10:00 Haselau, Wayne: The heritage of *Clivia nobilis*.

10:00 - 10:30 Van Rooyen, Francois & Tarr, Brian: The heritage of *Clivia gardenii*.

10:30 - 11:00 Winter, John: The heritage of *Clivia miniata*.

11:00 - 11:30 Tea

Session 2: Chairperson USA/Europe

11:30 - 12:00 Van der Merwe, Lena: The heritage of the Clivia Society.

12:00 - 12:30 Coates, Ian: The heritage of *Clivia mirabilis*.

12:30 - 13:00 Russell, Greig: The heritage of the Blackbeards.

13:00 - 14:00 Lunch

Session 3: Chairperson NCC

14:00 - 14:30 Chubb, Sean: The heritage collection.

14:30 - 15:00 De Coster, Pierre: The heritage of *Clivia* in Europe.

15:00 - 15:30 Todd, Robin: The heritage of *Clivia* in the United States.

15:30 - 16:00 Tea

Session 4: Chairperson ECCC

16:00 - 17:00 Discussion of the day's talks

22 September

Session 5: Chairperson KZNCC

09:00 - 09:30 Marriot, Helen: The heritage of *Clivia* in Asia.

09:30 - 10:00 Hammett, Keith: The heritage of *Clivia* in New Zealand.

10:00 - 10:30 Smith, Ken: The heritage of *Clivia* in Australia.

10:30 - 11:00 Tea

Session 6: Chairperson Australasia

11:00 - 11:30 Conrad, Ferozah: The evolution of the genus *Clivia*.

11:30 - 12:00 Dixon, Roger: Relationships in the genus *Clivia*.

12:00 - 12:30 Spies, Paula: Genetic variation in *Clivia*.

13:00 - 14:00 Lunch

Session 7: Chairperson Metro CC

14:00 - 14:30 Maleka, Frank: Colour formation in *Clivia*.

14:30 - 15:00 Spies, Johan; Van der Westhuizen, Hesmari; Stegmann, Suzanne: Implications of the research results for *Clivia* lovers.

15:00 - 15:30 Discussion of the day's talks

15:30 - 16:00 Tea

Hilton Clivia's



Lionel and Debbie Bester, 27 Park Lane, Hilton

E-mail - lbester02@telkomsa.net

Telephone - 033 343 3786

Contact Lionel - 082 567 1074



Clivia Society Conference Clivia Auction Application Form

To be submitted by 2 July 2010 to Joubert van Wyk: Signed, scanned and emailed to myClivia@africa.com

Name of applicant ("seller"):				
Telephone number:				
Email address:				
Postal address:				
Seller's banking details				
Account name:				
Bank:				
Branch:				
Branch number:				
Account number:				
Plants submitted for consideration:				
No.	'Name' or description and a short history of the plant (e.g. breeder, name of photographer, date of photo, colour number from Clivia Colour Chart II etc);	Live auction	Photo*	Reserve price, if any

* Three digital photos of the plant including a flowering umbel must accompany the application form. The photographs must be no smaller than 800kb and no larger than 1.5 Megabytes. Recommended size could be achieved at 72 ppi and 800 x 600 pixels in 8 bit mode. Please do not interpolate photographs upwards.

The seller herewith authorises the Clivia Society to publish the pictures that accompany this form and the information relating to the plant(s) mentioned on this form in any manner deemed fit. The seller further authorises the Clivia Society to pay the net proceeds, i.e. after deduction of 10% commission, to the seller by EFT to the account number specified above in this form, at the risk of the seller.

The Clivia Society makes no warranties or representations of any kind concerning the accuracy of the information provided to it by sellers and provided to potential bidders. All such information is provided on an "as is" basis by the Clivia Society.

In no event shall the Clivia Society, its office bearers or agents be liable for any direct, indirect or consequential damages resulting from the offer or sale of any auction plants or the transfer or payment of any monies.

Signed by seller:

Date:

For office use only:

No.	Plant selected (yes / no)	Live auction	Owner informed	Reserve price	Winning bid	10% Com	To seller
						Total:	*

* To be paid to the seller.



REGISTRATION FORM: Clivia 2010

21st & 22nd September 2010
Cape Town, South Africa

1. PARTICIPANT ATTENDANCE INFORMATION

Note: Please provide information as you wish it to appear on your badge and on the official participant database. A copy of this registration form should be completed for *each full registration (not required for accompanying persons)*.

Title: Mr/Ms/Dr/Prof		Last Name / Surname	
Mailing Address:		First Name:	
		Company / Organisation:	
		Phone & Cell:	
Country:		Fax:	
Postal/Zip Code:		Passport / ID number:	
E-mail address:		Web address:	
Indicate your membership (where applicable) with 'X'		Clivia Society	Other: please specify
Special Dietary Requirements: Mark with 'X'	Vegetarian	Halaal	Other Please specify -

2. ACCOMPANYING PERSON / SPOUSE

	Title	Family Name / Surname	First name
First accompanying person			
Second accompanying person			
Third accompanying person			

3. SUMMARY OF ITEMS

A	Description	Number of persons	Total
1	Full registration (on or before 15 July)	500	
2	Full Registration (after 15 July)	600	
3	Accompanying person registration*	400	
4	One day full registration: 21 September	300	
5	One day full registration: 22 September	300	
6	Accompanying person registration: 21 September only	300	
7	Accompanying person registration: 22 September only	300	
8	Auction on Wednesday 22 September: snacks and light meal, incl. wines	100	
9	Full registration for Photographic Workshop on or before 15 July	150	
10	Full registration for Photographic Workshop after 15 July	200	
Subtotal			

*An accompanying person is defined as a person accompanying a fully registered delegate to the paper presentations.

Registration fees include the following entitlements:

- Full registration - entrance to sessions, conference bag and registration pack and teas. Snacks and wines at the evening "meet and greet" registration function are also included. Light lunches will be available in the Sanlam cafeteria for your own account.
- Accompanying person - as above, but excluding conference bag and registration pack.

4. PAYMENT BY MEANS OF A CREDIT CARD. If you submit credit card details, your card will be manually debited by Sure African Imprint Travel. Please provide the following information.

Card type	Card Number	
Expiry date (month and year)	Last 3 digits on back of card (CVC number)*	
Name of card holder (as printed on the card)		

5. DISCLAIMER

Registration fees do not include insurance for participants against personal injuries, sickness, theft, or property damage. This applies to any event associated with CLIVIA 2010. Participants are advised to obtain whatever insurance they consider necessary. Neither the Organizing Committee nor its sponsors or committee members assume any liability for loss, injury or damage to persons or belongings, however caused.

In the event that the CLIVIA 2010 Conference is postponed, cancelled or abandoned by reason of war, fire, storm, explosion, national emergency, labour dispute, strike, lock-out, civil disturbance, inevitable accident, force majeure, the non-availability, either wholly or partially of the Conference Centre or any other cause not within the control of the Organizing Committee, the said Committee shall be under no liability to the Sponsors, Exhibitors, or delegates in respect to any actions, claims, losses (including consequential losses), costs or expenses whatsoever which may be brought against or suffer or incurred by sponsors, exhibitors or delegates as a result of the happening of any such event(s).

If faxing: Please do NOT return this page.

Signature:

Date:

6. CANCELLATIONS AND REFUNDS POLICY

- Refund (less 20%) if written cancellation is received before **15th August 2010**.
- Refund (less 50%) if written cancellation is received before **31st July 2010**.
- Refund (less 70%) if written cancellation is received on or before **15th July 2010**.
- No refund will be granted after **15th August 2010**.
- The committee reserves the right to cancel any of the tours should there not be sufficient support. In this case fees paid will be refunded.

7. PAYMENT

The conference is not registered for Value Added Tax.

All payments are due with submission of the registration form.

To qualify for the discounted registration fee (R500.00), payment should be made on or before **15 July 2010**.

8.1 PAYMENT BY MEANS OF A BANK TRANSFER

- Please state your full names clearly on the money transfer.
- Please note, bank charges are for your OWN account and this should be stipulated to your bank. Please advise your bank that the charges should be included in your deposit amount.
- A copy of the bank deposit receipt should accompany your registration form and must be posted or faxed (+27 12 804 8892) to the Conference Secretariat: CLIVIA 2010 at P.O. Box 74888, Lynnwood Ridge, 0040 Pretoria, South Africa.

Conference account details

Payable to	Clivia Society		First National Bank
Branch name/code	First National Bank Adderley street / 201 409	Swift code	FIRNZAJJ
Account name	Clivia Society	Account number	62258353384
Reference	Insert your surname as the reference on the deposit slip		

8.2 PAYMENT BY MEANS OF A CREDIT CARD

If you submit credit card details, your card will be manually debited on behalf of the **Clivia 2010 Conference by Sure Travel (African Imprint Travel)**. Provide the required details under point 4 on page one.

9. SURE AFRICAN IMPRINT TRAVEL: OFFICIAL TOUR OPERATOR FOR CLIVIA 2010.

Sure African Imprint Travel can take care of your flight reservations, accommodation arrangements, car rentals and airport transfers. Please visit the website for comprehensive information. Any specific requirements and needs can be requested on a down-loadable form from the website. Your contact person at Sure African Imprint Travel (Ninapark Akasia, Pretoria) is William Cook, at E-mail: wcook@saitravel.co.za; Tel: +27 12 5421911 (office hours); Fax: +27 866886170 Cell Phone 27 825767080 Web site www.africanimprinttravel.co.za.

ACCOMODATION

Sure African Imprint Travel has been appointed to handle reservations. Special group rates have been negotiated with several hotels, guest houses and B&B's.

CLIVIA SHOW SCHEDULE

[Kry by Sakkie]

CLIVIA 2010 TOURS

The organizers of the various tours listed below are facing a "chicken and egg situation" in fixing the prices of their tours. They need to have a good idea of numbers of people who are interested so that they can hire a coach of the appropriate size. The larger the number of people on a tour, the less expensive it is per head for coach hire. A considerable outlay is involved and Clubs cannot afford to make a loss if they get the numbers wrong. You, on the other hand, may be waiting to see a price before committing yourself to a tour.

So, rather than waiting till the last minute before booking for a tour, it would be a big help if you would let the Secretary of the Clivia Society (+27 (0)12 804 8892, e-mail: Cliviasoc@mwweb.co.za) know of your interest (without commitment at this stage) as soon as possible. She is co-ordinating all responses and will then pass on your name to the organizers of the tour(s) in which you are interested. If you want any information about any of the tours you can contact the persons listed below directly.

(1) 16TH SEPTEMBER 2010 THURSDAY

Pre-Conference tour arranged by KZN Clivia Club - 16 to 20 September 2010

KZN Clivia Club Plans for Visiting Delegates 2010

Morning – Visiting delegates will meet Francois van Rooyen in Greytown at 9:00am. They will be escorted to a habitat population of Clivia near Kranskop.

Afternoon – They will return to The Gem Farm (Francois & Pieter van Rooyen) for lunch and viewing of their Clivia.

17TH SEPTEMBER 2010 FRIDAY

Morning – Visiting delegates will travel through to Sean and Terry Chubbs farm at 9:00am to view the Thurlow Collection of Clivia (Habitat Heritage Collection).

18th September 2010 SATURDAY

Morning – KZN Clivia Show – Meeting breeders and Clivia friends.

Afternoon – Will be escorted by John Handman (Little Falls Farm) to a habitat locality near Pietermaritzburg.

Evening – +/- 7:00pm Clivia cheese & wine Auction function

19th SEPTEMBER 2010 SUNDAY

Morning – Visiting delegates will view John Handman's collection at Little Falls Farm.

Afternoon – They will go to Liz and Glen Boyd (Karkloof Clivia) for lunch and viewing of their Clivia.

20th SEPTEMBER 2010 MONDAY

Visiting delegates will visit Val & Roy Thurston in Kloof to view their collection.

Details and contact numbers of all breeders in KZN will be provided for visiting at delegates leisure upon appointment.

All delegates to visit KZN and take part please contact Jane Lawrence about accommodation.

JANE LAWRENCE Tel: 033-343-1380 Fax: 033-343-1385 E-mail: Jane@syntax.co.za

Transport to and from airports and itinerary events will be organized by the KZN Clivia Club closer to the dates. Pricing will be given once we are informed.

Lionel & Debbie Bester have advised they are willing to prepare plants, and secure Phyto Sanitary Certificates, and ship off plants purchased by overseas customers during their visit to South Africa and the 2010 Conference. Delegates can contact them directly for pricing.

It is imperative that prospective visitors secure Import Permits, as required by their respective countries. Anyone wishing to organize this service can also contact them directly.

Lionel & Debbie Bester Tel: 033-343-3786 Cell: 082-567-1074 E-mail: lbester02@telkomsa.net

Other Clivia Breeders you may wish to visit in KZN are: Andy Forbes-Harding, Brenda & Etsel Nuss, Brian Tarr, Clive & Ebb Graham, Daan Decker, Derick Johnson, Hottie Human, Ken Rosling, Lionel & Debbie Bester, Louis Lotter, Mike Callaghan, Nick Kruger & Liz Cuthbert.

For all information needed concerning KZNCC breeders or any other KZN Clivia Club members you may contact Liz Boyd Tel: 033-330-2628 Cel: 082-825-2124 E-mail liz@karkloof.co.za

For any further information regarding any of the above please contact Francois van Rooyen thegem@gom.co.za, Glen Boyd glen@karkloof.co.za



(2) MONDAY 20 SEPTEMBER

A one-day coach tour to Hermanus, taking the spectacular coastal route. The first stop will be the Harold Porter National Botanic Garden to see natural fynbos and wild flowers. At Hermanus Southern Right whales may be seen close inshore in Walker Bay. There will then be a stop at Felicity Weeden's home, where a light lunch will be served. Members of the Overberg Clivia Interest Group have arranged a mini-Show/Display. There will also be an opportunity to view Felicity's Clivia collection. Her plants are regular winners at Cape Clivia Club shows.

The coach will return to Cape Town in the afternoon, via the scenic Sir Lowry's Pass, in time for delegates to register and attend the "meet and greet" function. The cost per head of the coach trip is likely to be between R200 and R300, depending on numbers. (Enquiries: John van der Linde + 27 (0)21-6714535 or vandal@iafrica.com)

(3) SUNDAY 26 SEPTEMBER TO WEDNESDAY 29 SEPTEMBER

(The final arrangements for this tour have yet to be confirmed) A tour to the *Clivia mirabilis* www.plantzafrica.com/plantcd/Cliviamirabilis.htm habitat on two farms in the Vanrhynsdorp area some 300 km up the Cape West Coast.

(www.capewestcoast.org) to the north of Cape Town. Special permission has also been obtained for access to Oorlogskloof, where *C. mirabilis* was first found. The whole area is a region of

exceptional diversity and plant endemism. Note that this is well before the time at which most *C. mirabilis* will be flowering – but in previous years a few plants in flower have been found in September visits.

Some sites are more accessible than others. Walking uphill, scrambling over rocks and amongst bushes on sloping ground will be involved. Because it can get very hot later in the day the habitat visits will take place early each morning. The mini-coach will return to Cape Town on the Wednesday. The tour includes meals, shared accommodation in Vanrhynsdorp www.places.co.za/html/vanrhynsdorp.html and traditional farm hospitality.

Numbers for this tour have had to be limited to a maximum of 12, including those who have already expressed interest in this adventure -trip. (Enquiries: John van der Linde + 27 (0)21-6714535 or vandal@iafrica.com)

(4) 4-5 OCTOBER***Nobilis* tour (arranged by Eastern Cape CC)**

Contact person: Willie le Roux email: girlylr@telkomsa.net.

(5) EAST COAST CLIVIA HABITAT TOUR

Wayne lives in the Transkei but is a member of the Cape Clivia Club. The party will be limited to 10 and preference will be given to visitors from overseas. Payment for this tour will be direct to the operator, and not to the Clivia Society. &

CAPE CLIVIA CONGRESS AUCTION**2010 CLIVIA SOCIETY AUCTION**

The Clivia Society will be holding its 5th quadrennial international conference coupled with an auction of various rare and exceptional Clivias. The conference will be held on 21 & 22 September 2010, at the CR Louw Auditorium at the Sanlam conference centre, in the main Sanlam Head office building, Voortrekker Road, Bellville in Cape Town, South Africa.

Introduction

The objective is to provide conference attendants the opportunity to acquire various extraordinary plants for their collections and create additional excitement and publicity around the conference. The auction also has the benefit for the owners of exceptional plant to market their plants to a discernable market segment able to pay up and for sellers to establish current market prices for some of their plants. Auctions are generally regarded as efficient price setting mechanisms, and as such can serve as interesting benchmark and reference price determination function within the Clivia community.



The auction will be held on the evening of the last day of the conference as part of the closing of the conference. As such a light dinner function will be held immediately after the final presentation of the conference. The auction will then start soon thereafter in the conference auditorium. The commission from the sales will be used to cover the auction related costs, with the Society's share going for general Society use. The auction will consist of a live auction of between 50 to 70 plants and artefacts.

Timetable

May 2010: Invitations open for Clivia Society members to submit entries.

By 2 July 2010: Entries to be submitted

By 2 August 2010: Entries adjudicated and entrants informed; Photos placed on Conference web pages

21 September 2010: Display area prepared; Benching

22 September 2010: Bidder registration; Auction; Buyer payments; Plants collected

Within week post auction: Society and Cape Clivia Club commission and sellers' money transferred.

Selection process

A panel nominated by the Society will serve as the Auction Selection Panel. Such panel will consider the entries and select approximately 50 to 70 plants for the live auction. Entrants will be informed of the selection and/or non-selection of their entered plants as per the above timetable.

A reserve price may be specified on the application form for a plant but preference may be given to plants where no reserve price is specified. Reserve prices will be displayed with the plants, together with the name of the seller and ideally a short description of the plant.

Entries

An entry consists of:

1. Three electronic photos – one showing the umbel of the entry plant and the other photo showing the entire plant of the actual plant on offer. The photographs must be no smaller than 800kb and no larger than 1.5 Megabytes. Recommended size could be achieved at 72 ppi and 800 x 600 pixels in 8 bit mode enabling good quality photographs to be used on the Society's web pages displaying the flowers and the plant. If possible, there should be a Colour Chart II clearly visible in one of the photographs showing the nearest colour next to a flower.
2. A fully completed entry form relating to the entry plant.

Only fully completed entries will be considered.

Rules and regulations

1. A selection panel will adjudicate all entries, using the information and digital photographs submitted, to decide on the auction plants.
2. Only one specimen of a specific clone/cultivar (for instance 'Potties Peach' or 'Q2') will be auctioned. If submissions for more specimens of a specific clone (which is included in the list of plants to be auctioned) is received the most mature offset will be selected. More than one specimen will only be allowed if in the opinion of the selection panel it is warranted.
3. Mature plants should be entered for selection. In exceptional cases the selection panel will consider allowing immature offsets to be auctioned.
4. The panel's decision is final and will be made known on or about 2 August 2010.
5. A commission of 10% will be payable by the seller to the Society (which the Society will share on a 50:50 basis with the Cape Clivia Club) following the sale of each item. The commission will be deducted from the selling price and the net amount will be electronically transferred, within 7 days of the auction, to the bank account of the seller specified in the original entry (or the South African bank account of the agent of a non South African resident). Only electronic payments in Rand will be made.
6. Setoff will not be allowed i.e. sellers cannot offset any of their sale proceeds against any purchases made by them. Purchases must be paid for in full.

*A ten day Clivia habitat tour is planned from
1st to 11th October 2010.*

Host is Wayne Haselau of Wild Coast Clivias.

Trip travels along the East Coast of South Africa and includes visits to the habitat of 4 species, *Clivia nobilis*, *C. miniata*, *C.robusta* and *C.gardenii*.

Please contact Vivienne McIntosh directly at

viviennemc@polka.c.za

for further information or go on line and check the Cape Clivia Club website.

We look forward to hearing from you.



Wild Coast Clivias.



Yellow/Blush *C. nobilis*, Qora River habitat.



Wild Coast Clivias.



These two from southernmost mutating colony-full throat *C. miniata* and *C. nobilis* in habitat.

7. If a plant remains unsold due to the highest bid being lower than the reserve price, a commission of 10% will be payable by the owner on the highest bid received subject to a maximum of R1000.00 and a minimum of R100.00. Such a payment is to be made to the Society Treasurer immediately after the auction before the plant will be released to the unsuccessful seller.
8. In the event of a buyer not being able to effect payment for a plant, such plant will remain the property of the seller and can be collected by the seller immediately after the auction.
9. Any plants not collected by the later of 22:00 on Wednesday, 22 September, or within an hour of the end of the auction will not be the responsibility of the Society or any of its office bearers.
10. Sellers of plants, who cannot stay until the end of the Auction, must please appoint an agent to collect his/her plant, should it be unsold, due to no interest or a reserve price not being reached. Such sellers must also notify the Auction Master about the name of their agent.
11. The panel reserves the right to change the rules as deemed necessary or appropriate.
12. No correspondence will be entered into by the Society, whose decisions will be final and binding.

Conditions of sale

1. Attendance at the auction is free. A bidder's ticket will be R100.00, which will be refunded after the auction.
2. The auction list of sale is final.
3. Goods are sold "voetstoots".
4. Buyers or their agents must be present at the auction.
5. The highest bidder is the purchaser, subject to the auction item's reserve price (if any) being met.
6. Bidding and payment will be in SA currency.
7. Payment can be made by electronic payments (internet access will be available for winning bidders to be able to do internet banking transfers) within 1 hour after the end of the auction. Any other payment, except cash, only by prior arrangement. Ownership of plants is transferred to the new owner (buyer) on payment. No Credit is available.
8. Although the Society facilitates the auction on behalf of sellers, neither the Society nor their office bearers or subsidiary clubs are responsible or accountable for the authenticity of any item on offer, or responsible for any plant between the time of benching and the time of collection.

Benching and display

The selected auction plants must be benched before 9 a.m. Tuesday, 21 September at the Sanlam Conferencing Venue. They will be on display to the conference attendants during the day on Wednesday, 22 September until the start of the auction.

Registration and bidding

Bidders for the live auction will be required to register. Only bidders with registration numbers will be allowed to bid in the live auction. Bidders must register prior to the live auction. Interested parties who would like to bid on any of the plants on offer but who are not able to attend in person must find an agent to bid for them during the auction – noting that full payment must happen within an hour of the last plant auctioned as per the payment instructions contained in this document.

Non-residents in South Africa

Parties not resident in South Africa should obtain an agent in South Africa to whom they can send a plant they wish to enter into the auction. If the entry is accepted, the entrant should ensure that his/her South African agent is aware of these rules and the requirements, and that her/his plant(s) are benched at the appropriate time. The Society will transfer the net proceeds of successful sales (after deduction of the sale commission) to the seller's agent's Rand account in South Africa. The Society will not apply for Exchange Control approval to pay any monies outside South Africa. The Society does not take responsibility for arrangements between sellers and their agents in any form or other. &

Sakkie Nel on behalf of Joubert van Wyk

GROWERS' & BREEDERS' NOTES**'Pondo Frost' - an unusual form of variegation in *C. robusta***

In 1998 I collected seed from a number of *Clivia* colonies while on a hiking trip in northern Pondoland.

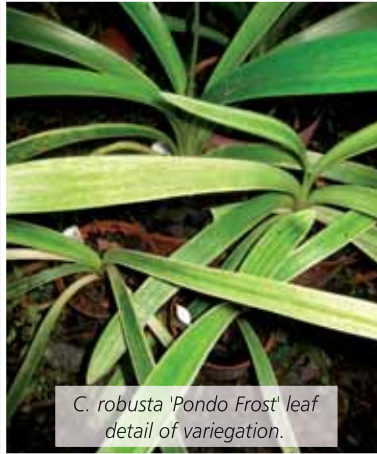
At this time *Clivia robusta* had yet to be described. On germination I noticed that a certain percentage of the seedlings with the normally lethal albinistic trait (in *C. robusta*) showed faint signs of chlorophyll in their young leaves. The variation from population to population fascinated me and I attempted to grow these plants according to locality. I was working internationally at the time and unfortunately the plants got mixed up and the special pale leaved ones were lost.

Making a mental note to return I did not get the chance again until 2005, when on fishing trip I managed a visit to a few of the original localities and collected more seed. I was much more careful this time and nurtured

the seedlings. Once again a few seedlings showed this unusual variegation and I passed a few on to some of my *Clivia* pals. As far as I am aware none of theirs have survived, however I have five maturing specimens left of this type which are very unusual, all displaying varying degrees of chlorophyll intensity. This may be visible from the photographs as well as what can only be described as chlorophyll stippling on a white background. The growth of the plants seems directly proportional to the amount of chlorophyll, present as one would expect.

I hope that someday I can get these magnificent plants to flower and even perhaps to develop a strain displaying these unusual characteristics. I have called this rare variegation type 'Pondo Frost'. &

Wayne Haslau, Cape Clivia Club



C. robusta 'Pondo Frost' leaf detail of variegation.



C. robusta 'Pondo Frost' plant.

GROUP 3 YELLOWS

As you all probably know there are Group 1 and Group 2 Yellows which produce seedlings with unpigmented bases and subsequently flower yellow when crossed with other plants within their own Group.

There are yellows which have come to my attention that do not produce yellow flowering seedlings when crossed with either Group 1 or Group 2. These are mostly Habitat collected plants. Some examples of these plants are listed in a *Clivia Society Yearbook*.

There are 4 plants collected in the greater Pietermaritzburg area in the early 1960's namely:

- Potterill Blush Yellow
- Greendale yellow
- Peacevale yellow
- Celtiskloof yellow.

All of these plants are compatible with one another and produce yellow [or slightly blushed] flowering seedlings when crossed together. These plants have, for sake of a better name,



Potteril Blushed Yellow.



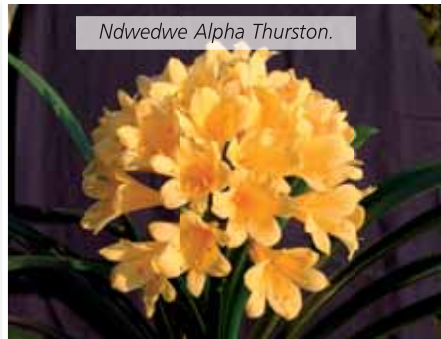
Peacevale Blushed Yellow.



Celtiskloof Yellow.



Greendale Blush Yellow.



Ndwedwe Alpha Thurston.

been called 'Group 3 Yellows' in my breeding programme. They all flower yellow with a very slight pink blush or tiny speckling on the reverse of the flower. They produce seed pods which ripen red and all seedlings are pigmented but still flower yellow.

Ungrouped Yellows

Alpha Thurston, a habitat collected plant, has been found not to be compatible for producing yellow seedlings with any other Yellow except

her own seedlings so we have classified her in a group known as 'Alpha Group'.

Another habitat plant which seemed to be in her own group is 'Mvuma Yellow'.

Fortunately she is semi-fertile when selfed and so we are growing on unpigmented seedlings from the selfing. Hopefully these will then be crossed back to the original clone to produce more yellows with the same genetic makeup as 'Mvuma Yellow'.

Many of these clones can be viewed on my website www.Cliviasa.co.za under 'Habitat heritage plants'.&

Sean Chubb, KwaZulu Natal Clivia Club

Trip to some Natal Clivia Growers and Pietermaritzburg Show

A quick visit to Amalinda Nursery in East London started the trip on a good note. Among the special plants was a wide petal GREEN Clivia - not from Japan!

From there a short visit with Stella van Gas and her immaculately neat nursery and her umbels of enormous berries.

The last call in East London was to Gerald Mullers Floradale Nursery, home of the famous and beautiful "Floradale Apricot". As luck would have it, a very beautiful pastel was found, now named "Strawberry Blonde".

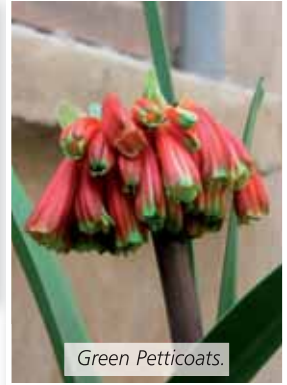
The next three days were spent visiting habitat colonies, followed by a long awaited visit to Sean Chubb.

What a delight. There was a virtual sea of Clivias planted out under beautiful spreading trees, lovely things of all shapes and designs and colours. It was easy to loose yourself wandering in the carpet of flowers, a bit like "a host of shining daffodils"!

Among the plants going out for sale were beautiful pink "Cameron Peaches" of perfect form and a huge variety of other lovelies. Sean's greenhouses are immaculate and his extensive collection



An unusual Clivia nobilis, now named Green Petticoats.



Green Petticoats.



Stella van Gas.



Garden view at Sean Chubb.



A reflex out of Andrew Gibson.



A pastel versicolour.



A beautiful reflexed pastel.



A good bi-colour.



An endless variety.

is beautifully displayed on stepped benches.

Needless to say the house was also filled with plants waiting for pollination (It made me feel quite at home!). Thanks Sean and Terri for allowing us to invade your home and garden and enjoy the beauty. Not to mention the two busy little sons who were involved in everything!

Next day was the Pietermartizburg Show. Again there were beautiful blooms on show. Perhaps some of the most spectacular were ex habitat plants. I am delighted when I see these, because I know they have been saved from the multi collectors!

Two plants that featured among the top three at the show were "Gems Apoline" and First Time Fower – a quite exceptional recurved yellow, and a very fine plant procured from Chris Welgemoed that is peach with a green throat and pink edges, and is perfectly recurved. Both plants were absolute non pareils.

On to John Handman's super spread. The lovely view from his front stoep looks out through a blue hazed valley into the mystical distance.



Gem's Apoline.



Gem's First Time Bloomer.



Chris Welgemoed bred recurved peach.





John Handman's greenhouse.

His shade houses are immaculate and beautifully built, the tables for the plants all at waist height.

His collection is a dream come true. I felt as if I was walking on hot bricks, too scared to comment in case the dream went away! No time at this point to look at the shade house containing the red plants.

The "Tipperary Peaches" were all in bloom and what a selection there is - endless variety, even baby ribbon pink.

The next stop was Nick Kruger's lovely place. The property is hidden away in the mountains with tall indigenous trees all along the river banks next to the road. Under these trees he has set out hundreds of Clivias along the stream banks. Higher up and beside the road is a large planting of yellows and peaches- a very beautiful sight.

Nick has very fine material and of course he has a whole range of "Bonnie's Peach" which he has been working with lovely results. He doesn't show, but when you visit, you have the good fortune to view his own private show!

From there we travelled up to Newcastle to be with Hottie Human whose wife Bokkie had sadly passed away suddenly. Hotties property is on sloping ground and his main Clivia garden is set on a hillside behind the house under spreading trees. There is obviously very little wind here as the flowers in his garden were perfect. Not to mention an outstanding Hirao on the stoep.

In the garden were lovely yellows, reds, oranges and of course, Andrew Gibson, Gibson look-alikes, 9-11 in bloom, superb pinks and some stunning green throats.



Habitat plant in the John Handman collection.



An exceptional yellow in the John Handman collection.





Hirao at Hottie Human's greenhouse.



Beautiful first flower.



Stardust.



Pink Petunia - interspecific.

The front garden was also planted to numerous Clivia as well as other plants – a lovely garden.

Thanks Hottie, for having us and allowing us to enjoy your lovely garden. Lots of sympathy and love.

While in Newcastle we also met the Doves. They are involved with all sorts of things including parrots, Clivias and daylilies. A pleasant hour was spent there and then we headed for the Van Rooyens at Greytown.

It is always a pleasure to visit this lovely old farm. The hospitality of the Van Rooyens is legendary and deservedly so! Desiree is a great hostess.

Since my last visit, beautiful new shade houses have been erected with the plants beautifully displayed on stepped benches. This is the home of "Apoline" – Best on Show PMB Show 2009, and so many other outstanding plants. Not to mention a whole range of exceptional Clivia gardenii, including the lovely near white "Green Ivory".

The old established garden was lovely in spring colour with petreas dripping white and violet blue behind a magenta azalea in full bloom. A charming addition to the scene was a duck and ducklings paddling in the nearby stream.

Frans and Pieter grow a number of unusual indigenous plants including a Stone Plant of enormous proportions, that climbed up into the surrounding trees.

The last day and back to John Handman to collect and prepare plants. Unfortunately we had to miss visiting Liz Boyd's superb garden and Clivia plantings because of time.

Some more glorious time was spent in John's shade-house containing mainly red Clivia-amazing stuff.

From there on to Val and Roy Thurston's attractive home. Unfortunately most of Val's plants were not yet blooming. She has such marvellous ex habitat plants such as "Ngidi Pink Champagne", "Alpha" and "Beta Thurston" etc. Roy and Val have a large and beautiful property overlooking a deep forested gorge. The garden boasts rare aloes from further north and beautiful little orchids nestling in the trees.

And so, back to reality and home.

The driver, guide and entertainer on this trip was Wayne Haselau. He kept us laughing and got us there on time every time. Well done and many thanks Wayne. &

Felicity Weeden, Overberg Interest Group

- **Clivia seed for sale:** Individual crosses between selected excellent quality plants (adult, seedlings and seeds originally obtained from Charl Malan, Sean Chubb, Christo Lötter, Edgar Fevrier, Rudo Lötter, Ian Vermaak etc.) Peach x peach crosses - 1000 seeds; Yellow x peach - 500 seeds. All at a very special price of R5 each (sorry to say) to South African members only. Postage extra. Please contact Willie Le Roux 041 360 3480 or e-mail girlylr@telkomsa.net. Willie & Cynthia Le Roux Tel: 041-360 3480

- **Clivian plant sale - Nylstroom/Modimolle:** Due to space requirement we have decided to offer the contents of my Nursery House 4 at CUT PRICE! The plants originated from many Clivia gurus such as Gert Esterhuizen, Christo Letter, P Nel, Bertie Gillaume, Dave van der Berg, Wessel Lotter, the late Fanie van der Westhuizen & Ammie Grobler. CONTENTS: 90 Broadleaf plants (4-8 years old), 50 Mature large plants (4-8 years old), 320 assorted orange hybrids, 5 large yellow plants (7 - 10 yrs), 15 yellows (4-6 yrs) 5 variegated young plants, 10 Intespecific plants (4-6 yrs) 3 C. gardenii, 2 C. caulescens. Total = 500

plants for only R22 000.00. Free delivery within 200 kilometer from Nylstroom can be arranged. The plants can be viewed from 23 rd of November onwards. Please make an appointment, Ans Jacobs: Tel. 014 717 3674 or 082 372 0765.

- **Thurlow Flora:** We have on offer a large variety of carefully bred seedlings and mature plants for sale. We specialise in pastel colours, oddities, species and original wild collected and named clones of clivia. Mail order and visitors welcome. For our latest plant list please contact Sean and Terri Chubb. Tel: 031 781 1978 e-mail: terric@iafrica.com. We also have available a few hundred different named daylily clones.

- **Clivia miniata seed** R200 per kg – plants from R2 each. Roly's Special Pastels seed R500 per kg – plant price on application. Roly Strachan, Box 57, Highflats, 3360 or Tel. 039-8350085 evenings only.

- **Clivian Plant Sale - Nylstroom/Modimolle:** Due to space constraints there are 500 Clivia plants to clear for R15 000 (Price is negotiable). The plants can be viewed by appointment. Ans Jacobs: Tel 014 717 3674 or 082 372 0765

CLIVIA TERMINOLOGY

Plant Terminology Notes

We communicate with words. If we want to communicate, we need to agree on what the words mean. I want to explain a few terms that can cause confusion.

Sources

I have defined some biology terms on my web site at: <http://www.shieldsgardens.com/info/Glossary.html> and I start from many of the definitions there. I also draw heavily from the deliberations of the American Hemerocallis Society's Scientific Studies Committee, of which I am a member. Besides my on-line glossary, there are lots of on-line sources for looking up technical terms:

- 1) Botanical Dictionary on Ibiblio at http://www.ibiblio.org/pic/botanical_dictionary.htm
- 2) Wikipedia at http://en.wikipedia.org/wiki/Main_Page
- 3) Use Google and enter "define" plus the word you want to look up; but remember that not all on-line information is equally reliable. I prefer citations from universities and botanical gardens.

Definitions

In this note, I am going to cover a few terms for normal plant parts, including tepals and whorls. I'm also going to try to explain doubles, polymerous flowers also known as multipetals and polytepalas, and unusual structures like appendages including crests.

First the normal structures:

Carpel – the female reproductive structures forming the ovary and pistil.

Keeled – V-shaped in cross-section; canaliculate. A crest is not a keel.

Whorl -- A ring of structures, such as leaves, encircling a stem or shoot. In flowers, there are 4 whorls: at the base, sepals; then petals; next stamens; and finally the pistil, which can be thought of as a whorl of carpels.

Tepal – a collective term for petals and sepals. It is used for those plant groups where the petals and the sepals are very similar in appearance, especially in the Amaryllis Family.

Now the unusual structures:

Appendage – extra tissue growing from one of the normal structural components of a flower.

"Appendage" is applicable to a variety of abnormal structures, at least in other plant groups. Perhaps we have not seen many of them yet in Clivia. The structures I see in Conway's 'Anastasia' are crests attached to the petal midrib.

Crest – A fleshy appendage growing from a tepal. "Crest" is preferred to "keel" because the term "keeled" has a very specific botanical meaning: V-shaped. Using "keel" for the tissue extension on the petal midrib is clearly incorrect. The cross-section of a midrib crested petal is an inverted T shape.

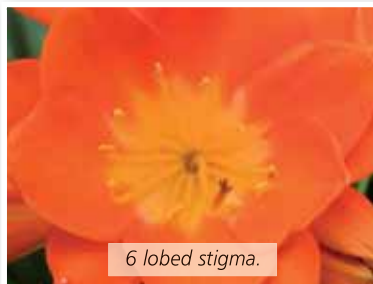


PHOTO JIM SHIELDS



Clivia Conways 'Anastasia'.

PHOTO ROGER FISHER



Appendages on the petals are called crests.

PHOTO ROGER FISHER



Two whorls make for a double Clivia flower - the extra whorl would appear to be tepals arising from transmuted stamen buds

PHOTO FRANCOIS VAN ROOYEN



Clivia miniata 'Gem's Leo' A Polymerous Clivia Flower - a 5x5 or a tetramerous form.

Double – a flower with extra whorls or if the components of one of the whorls are abnormal (i.e., petals for stamens), it is "double." A crested flower is not a double flower.

Polymerous -- A polymerous blossom is one having extra sets of normal structures or components, where a component is a petal or a sepal or a stamen or a carpel. The set is comprised of one petal and one sepal and two stamens. These sets are pretty clear when you take a flower apart. Pull off a sepal and an adjacent petal. Stamens come with them. If there is the normal number of whorls but extra components in the whorls, it is "polymerous."

A "4 x 4" polymerous flower has 4 petals and 4 sepals and 8 stamens. Often, there will also be 4 lobes (instead of 3) to the stigma. There are also 5 x 5 and perhaps even higher polymerous flowers in Clivia and other genera.

The notation "4 x 4" is quick and convenient, but not suited for formal technical usage. I suggest "tetramerous" "pentamerous" etc. for such flowers, at least as a place to start the discussion. I tried Googling "etymology polymer" and got this: May 23, 1994 ... Polymer etymology. The word comes from Greek: poly means 'many' and mer comes from merous which roughly means 'parts': ... www.lassp.cornell.edu/marko/etymology.html

People are using the terms "multipetal" (among the Clivia enthusiasts) and "polytepal" (in daylily circles). Both are used as nouns and seem to be perfectly understandable to those within the groups using these words, but almost incomprehensible to outsiders. The virtues of the term "polymerous" (an adjective) are that it is equally confusing to all hobby gardeners until they become accustomed to it and that the professional botanists will understand immediately what we are trying to describe.

My perspective is not that of defining show classes but rather of plant biology. I would like to see the Clivia world using recognizable terminology so that any plant scientists would know what we are talking about, should they come across our discussions of Clivia flowers.

There needs to be co-ordination of Clivia terminology, and a watchdog to see that Clivia usage conforms to accepted international usage in botany and horticulture. I nominate the Clivia Society for that international role. &

Jim Shields, USA

Groups without names

would like to have the following new Clivia interspecific group hybrid names registered [I am following Graham Duncan's example, featured in his book 'Grow Clivias' (Kirstenbosch Garden Series: SANBI, 2008, 2nd Edition)]:

1. Clivia Beardedbusta Group: [all *C. robusta* x *C. miniata* (of Bearded Man origin)]

First flowering in July, 2008. Fairly lax umbel, held above leaves, atop an erect dark green scape. On opening the spreading flowers are pale coral pink/orange exterior, yellow interior, with distinct green tips, maturing to deep coral pink/orange exterior, blush yellow interior. Leaves narrow, of medium length. Quickly develops a distinctly lengthened stem.

2. Clivia Robomin Group: [all *C. robusta* x *C. miniata* (all Broad Leaf Types)]

First flowering in July, 2008. Dense umbel held just above leaves, atop an erect dark green scape. On opening, the pendant flowers are light orange, on maturing, darker orange, with distinctly protruding anthers and stamen. The leaves are of medium length, and semi-broad. &

Jaco Truter

I [Ed] passed this on to Ken Smith, Registrar of the Clivia Society who replies –

The group proposals put forward by Jaco Truter are not correct [in terms of the naming conventions of interspecific plants]. You cannot have group names for each "special" type of *C. miniata* i.e. the 'Broad Leaf' or 'Bearded Man'. While it clearly gets very confusing for the layman the conventions from a horticultural standpoint must rule.



CLUBS AND INTEREST GROUPS

And now there are eight

The Eastern Province Clivia Club is very passionate about recruiting youngsters with a serious interest in cultivating Clivia and to assist them into becoming our growers of the future. I am therefore proud to announce that our scholar / student group has increased from four to eight over the last five months – with the new additions all being in the age group of 11 – 14 years.

JADE KRÜGER (11) AND KYLA KRÜGER (14)

They started very young assisting their mother, Carrie Krüger, in her nursery and so became aware of the indigenous plant Clivia. They immediately took a liking to it and soon started cultivating their own from seeds. They consider it the ideal hobby as it can be enjoyed at home with mother Carrie their mentor and brother Luke who is also a keen grower. WOW four growers in one family – must be a record! They are now the proud owners of respectively fifteen and twelve selected adult plants and of course numerous seedlings with a special fancy for variegated Clivia plants. For the first time and with great excitement they entered their plants for the 2009 EP Clivia show and are now proudly displaying a gold, silver and bronze certificate each. What a wonderful achievement at their age. May there be many more to come. I also believe that they are already active members of the Clivia Forum.



GIOVANNI BOUWER (12)

This youngster started showing an interest in gardening at the age of three and today produces their own vegetable in their back yard. His interest in Clivias started a few years ago when he accidentally kicked a ball over the wall into the neighbour's garden and when fetching it from the friendly lady noticed some beautiful flowering plants in her garden. On enquiring he was told that the plants were Clivias. He was so impressed and could hardly wait until the next day to visit the local nursery where he bought a couple of orange and later three adult yellow Clivia plants. Needless to say his savings were completely depleted. Today he is the proud owner of a collection of



twenty adult plants, about seventy three year old and lots of younger ones. He is very keen to learn all about Clivia from his mentor Jennifer Du Plessis and is eager to partake in the 2010 Clivia Show.

JED STEPHENS. (14)

This is his story :- "I have always been fascinated by things that can't be achieved easily, may it be engineering, cultivation, the arts or the amount of effort required that has been needed for the world to be manipulated by man. Clivias are one of these fascinations. The time invested into something which is particularly rewarding such as to nurture a plant from a seed to a strong and healthy Clivia is time well spent. I decided after hearing about the various different types of Clivias that I should try and grow some of them for my garden. I had no idea how to start, but as luck would have it in the next few days I saw an advertisement in the newspaper about a Clivia show to be held. While attending the show I asked many questions and received wonderful answers. It was recommended to me that I join the Clivia Club and so I did. I have taken



over all the Clivias in the garden and planted semi-mature plants in various pots. I now have twelve Clivias in pots and forty others planted directly into the ground. Thanks to the Clivia Club I shall from now on be in a better position to germinate seed and cultivate Clivia plants".

All four of these youngsters are really passionate about their hobby and we are fortunate to have them as members of our Club. I would like to assure them of our Club's fullest support and wish them every success with their venture. &

Willie Le Roux, Chairman, EPCC

Garden Route Clivia Club Show Report: 2009

The Garden Route and all its visitors have been treated to a true spectacle of flower splendour in 2009. Through monotonous dedication and hard work, the committee produced a showpiece that will stay embedded in the memories of each and every one for years to come. Intensity levels were higher and it is quite evident that the addition of energetic younger members to a committee consisting largely of wise and experienced senior citizens, created the favourable symbiosis for all of this to happen. What a TEAM!

The introduction of computer technology in 2008 was taken a few steps further in 2009 with Gordon Fraser sending his daughter and granddaughter on a graphics design course. The certificates they produced for the show are out of the top drawer and really something to cherish, frame and admire for years to come.

World renowned Ikebana fundi, Charles Kinnear, offered his expertise to the club at no cost at all. He generously did a most impressive and, to say the least, quite astounding Ikebana (Japanese art of flower arrangement) display in the foyer

that had everybody talking. On top of this we had a floral arrangement competition which attracted a total of six entries. This was done on the stage and provided the perfect backdrop for the magnificent clivias.

A big tent in the courtyard housed the food stalls and contributed hugely to make the show an event of festivity where families could come and relax for the day. Quality plants were on sale and people browsed the stalls with the smell of boerewors and braaivleis hanging in the air. The more knowledgeable Clivia lovers scrutinised the stalls for that bargain of a lifetime. One sensed a real carnival feeling as everybody relaxed and enjoyed the curry and rice, pancakes, boerewors rolls, cakes etc.

Clivia workshops were well attended and it was clear that the beauty of Clivia in full flower had the visitors mesmerised. They big-eyed stared and listened to every word and it was pretty clear that they left with a burning desire to also grow a prize Clivia one day. A late and weird flowering season threatened to derail our show. We relaxed the show rules and made a

late call to all our loyal and trusty members. The response was absolutely phenomenal as a record number of 30 exhibitors entered a record number of 401 plants in 43 classes. The flower spectacle was really a sight to behold and the judges, Charl Coetzee, Felicity Weeden and Johan Schoombee had a tough and unenviable task at hand to pick winners from a hall filled with winners. Every single plant was a winner in its own right.



Garden Route clivia Club Best On Show Winners.



Piet and Joyce at the Ceremony.

For the first time ever it was a clean sweep as Ricky and Noelia Jardim won Best on Show, Runner-up and 2nd Runner-up to Best on Show. Their spectacular Cameron Peach had no match and deservedly won Best on Show. Runner up to Best on Show was a Bella Donna Oprah seedling with spectacular recurving orange flowers. 2nd Runner-up was a Klein Erda seedling with the most extraordinary colours. The show was well attended over the two days and we especially thank all the members from other clubs around the country that made the effort to visit our show. It was once again great to build and strengthen Clivia relationships with Clivia lovers from all over the world.

2010 lies ahead and we endeavour to let everybody take notice of this fast growing and extremely dynamic Clivia Club situated in the picturesque Garden Route at the southern most tip of Africa.

Piet Theron and Mrs Joyce May Lilford receiving her certificate of honorary membership of the GRCC on the occasion of our 2009 Show. Joyce was born 22.08.1925.Quote" I became very interested in clivias after joining the JHB group when there were only ten of us. They informed me of the seminar to be held in Pretoria in 1994 and this is where I bought many of my clivias from Toy Jennings. I also bought from the Coromandel Nursery Stock." Joyce is a keen participant in the activities of the club and always interested to learn something new. She loves to find that she has something to contribute to any discussion about her beloved clivias and we feel privileged to have her as an honorary member. &

Gerhard Faber, Show Manager

STORIES BEHIND THE COVERS

Anyone surfing the web with Clivia in mind will occasionally encounter other things called 'Clivia' that are not the plants of our fancy. I thought it would be fun to catalogue these in a series of short articles. As a pupil, I frequently heard some of my fellow pupils using the term "x?@#%*+! Latin". ('x?@#%*+!', as used in comics, is called a grawlix - defined as a sequence of typographical symbols used to represent a non-specific, profane word or phrase). Latin didn't worry me much; my third language was French, conveniently structured much like English.

In my much later life however, I found a need to read botanical Latin. Whereas in the age of my youth, a schoolboy may have had the time and patience to learn a language with a completely foreign structure, it doesn't go down well now with an old grouch like me. I now use the term "x?@#%*+! Latin" with alacrity. I mean, please explain 'case' to me - I only know 'nut case' and 'pathetic case' ... and what of declensions, persons, gender and mood.

Thus when I inform you that 'Clivia' is a 3rd declension Latin noun as it is rendered in either nominative, vocative or accusative cases; is plural and neuter; is based upon the root 'clive, clivis'; and that it means 'slope' or 'incline'; I can elaborate on this subject absolutely no further. Apparently 'Clivia' can also be used as an adjective, under the same grammatical conditions, and means 'sloping', 'steep' or 'inclined'. Both uses are recorded as being 'uncommon'. So basically, when you encounter the word 'Clivia' amidst some ancient piece of Latin, the chances are that you will not find anything there that will aid you in your studies of our beloved clivias.

An English word utilising this same root is 'declivity' which means 'a downward slope' and has as a synonym 'declension', one definition of the latter being 'a downward slope' - which all goes to explain why when I start working with declensions in "x?@#%*+! Latin", I find myself on a 'declivity'. &

Greig Russell

PHOTOGRAPHIC COMPETITION

The Editorial Board of the 2009 Clivia Society Yearbook 11 announces the Clivia Society Photographic Competition. It is open to all and the object is to encourage Clivia enthusiasts to submit photographs from around the world. We would particularly like photos of plants that flower outside of the normal Clivia Show dates and therefore are not seen by many people.

This is an annual event that brings entries of photographs of attractive, as well as some unusual, Clivia flowers and plants. Prominent space will be allocated in the Yearbook to all winners and other suitable photos. The name of the Photographer and Grower, where submitted, will be published along with any other relevant information. There will be prizes for winners as shown below. The Best Photograph and Runner-up will be selected from all entries and will then not be eligible to win other categories. Prizes will be a selection of some of the rarest and most sought-after seed and/or seedlings to the value shown below and will be awarded next year when we know what is available.

Categories are as follows:

- *Clivia miniata*
- All Pendulous Species
- Interspecific
- Habitat Picture
- Single Flower any species

The conditions and rules of entry are:

1. The completed attached entry form must accompany submissions.
2. All entries are welcome, but due to publishing deadlines must be received by the last day of April 2010, to be eligible.
3. Publication rights for entries will be rested in the Clivia Society.
4. Entries are limited to six per class per person.
5. Photographs may be mailed to Clivia Photographic Competition, P O Box 53219, Kenilworth, 7745, Cape Town, South Africa
Or emailed to: acolade@ibox.co.za
6. Photos must be submitted in one of the following formats:
 - i. A Print in portrait or landscape at least 10 x 14 cm but no larger than 14 x 18 cm.
 - ii. On CD-R where the image is recorded in a tiff or jpeg format. The pixel size should be a minimum of 1600 x 1200 pixels as that should give a printable picture of approximately 14 x 10cm. The resolution of the image would be preferred at 300 dpi or greater but don't let a lower resolution stop you from entering.
 - iii. Photographs must be on their own and not embedded in another program. e.g. MS Word.
 - iv. email in jpeg format at 72 dpi with min. picture size 10 x 14 cm.
N.B. The type of submission in iv above must be available on a CD as all emailed photos that reach the final selection of 12, or on request, will have to be submitted to the specifications in iii above to remain eligible.
No scanned Pictures to be submitted by email.
7. If you wish your Photographs returned after the competition then you should include a suitably addressed envelope. (S.A. Entrants must include a stamp).
8. The decision of the Editorial Board on the Winners of the Competition is final and no correspondence will be entered into. &

CLIVIA SOCIETY PHOTOGRAPHIC COMPETITION ENTRY FORM

ESSENTIAL ENTRY DETAILS

NAME OF ENTRANT:			
ADDRESS & CONTACT DETAILS:			
PHONE:		AND/OR EMAIL:	
NAME OF PHOTOGRAPHER:			
DATE PHOTO TAKEN:			
NAME OF GROWER:			
ENTRY NUMBER (1 to 6):			
CATEGORY ENTERED: (X relevant box)		PENDULOUS SPECIES	SINGLE FLOWER
INTERSPECIFIC	HABITAT	MINIATA	
TYPE OF SUBMISSION: (X relevant box)		PRINT	E-MAIL
		CD-R	

OPTIONAL ENTRY DETAILS

REGISTERED PLANT NAME:
NAME OF BREEDER:
PARENTAGE OF PLANT:
BRIEF DESCRIPTION OF PLANT:
SUGGESTED PHOTO CAPTION:
PHOTOGRAPHIC DETAILS: CAMERA TYPE:
FILM DETAILS OR DIGITAL:
EXPOSURE DETAILS:
OTHER COMMENTS:

CLIVIA SOCIETY PUBLICATIONS

CLIVIA SOCIETY PUBLICATIONS		Int.
1. Pay per credit card to Clivia Society RSA Treasurer		1
2. Pay to William McClelland in America		
3. Pay to Ken Smith in Australia		
4. Pay to Alick McLeman in New Zealand		
5. Pay to Jaco Nel in Britain		
6. Pay to RSA Club Treasurer		
Society membership-2010		R 220.00
Membership fees for Students		R 110.00
Honorary Life Members		NII
2010 Publication Prices		
		Int.
Yearbook 1 -Electronic printing - Postage included		R 242.00
Yearbook 2 ,3,4,6,7,8,9,10 or 11 - Postage included		R 77.00
Ten or more copies of same item by Club or Group **		
Yearbook 5 -Electronic printing - Postage included		R 297.00
Cultivation of Clivia - Postage included		R 88.00
Ten or more copies of same item by Club or Group **		
Kweek van Clivia - Posgeld ingesluit		R 88.00
Ten or more copies of same item by Club or Group **		
Newsletters after 2002. Per copy - Postage included		R 19.80
Ten or more copies of same item by Club or Group **		
Hints on growing Clivia - available in electronic PDF format via e-mail		R 17.00
Proceedings of Clivia 2006 Conference on double DVD -7.50 hours		R 230.00
**Postage addit. and to be added to purchase price		
CLIVIA SOCIETY PUBLICATIONS		
The Cultivar Checklist of 2009 may be ordered from Ken Smith in Australia.		Price
Price for Australian members -Postage included		AU \$ 10.00
Price for the rest of the world members - Postage included		AU \$ 13.25
2010 Advertisement Prices		
		Cost
Smalls (1 to 6 lines)		R 40
Smalls (7 to 10 lines)		R 70
Quarter page		R 125
Half page		R 250
Full page		R 500
A5 single page insert supplied by advertiser		R 600
A5 double page insert supplied by advertiser		R 1,000
A4 single page insert supplied by advertiser		R 1,200
A4 double page insert supplied by advertiser		R 1,500
Paying by Bank Deposit or Electronic Transfer:		
Account name:	Clivia Society	
Type account:	Cheque Acc	
Bank:	Absa	
Branch:	Pretoria North	
Branch code:	509 145	
Account number:	4055377527	
Deposit Reference:	Your initials and surname	
After deposit was made, please send e-mail or fax.		
Treasurer :	Sakkie Nel	
Tel: + 27 12 361 6415		
Fax number :	086 639 4077	
e-mail:	corgas@vodamail.co.za	
Paying by credit card		
Type of card:	Master, Visa or Diners ect.	
Name of card holder:		
Card number:		
Expiry date:		
Three digits on reverse side of card :		
Fax number :	086 639 4077	
e-mail:	corgas@vodamail.co.za	



CLIVIA SOCIETY PUBLICATIONS

USA	Aus.	NZ	UK	RSA
2				
	3			
		4		
			5	
				6
US \$ 28,50	AU \$35,00	NZ \$ 36,00	£ 16,50	R 120,00
US \$ 14,25	AU \$ 17,50	NZ \$ 18,00	£ 8,25	R 60,00
Nil	Nil	Nil	Nil	Nil
USA	Aus.	NZ	UK	RSA
\$ 29,00	\$ 32,00	\$ 39,25	£ 18,00	R 220,00
\$ 15,00	\$ 22,00	\$ 23,00	£ 10,00	R 70,00
\$ 13,50	\$ 20,00	\$ 21,00	£ 9,00	R 60,00
\$ 36,00	\$ 39,25	\$ 48,25	£ 22,25	R 270,00
\$ 11,00	\$ 12,00	\$ 14,50	£ 8,00	R 80,00
\$ 10,00	\$ 10,80	\$ 12,50	£ 7,00	R 70,00
\$ 11,00	\$ 12,00	\$ 14,50	£ 8,00	R 80,00
\$ 10,00	\$ 10,80	\$ 12,50	£ 7,00	R 70,00
\$ 4,00	\$ 4,00	\$ 5,00	£ 2,00	R 18,00
\$ 3,60	\$ 3,60	\$ 4,50	£ 1,75	R 16,00
\$ 2,50	\$ 2,50	\$ 3,50	£ 1,50	R 17,00
\$ 31,00	\$ 34,00	\$ 44,00	£ 20,50	R 230,00



CLIVI-ARTA



REPRESENTATIVES OF CLIVIA ENTHUSIASTS

- ↻ Australia Ken Smith. 593 Hawkesbury Rd., Winmalee, NSW 2777, Australia.
Tel: +61 247543287; e-mail: cliviasmith@hotmail.com
- ↻ Netherlands Aart van Voorst. Frederik Hendriklaan 49, Hillegom, TE 2181, Netherlands.
Tel: +31 252529679; e-mail: a.vanvoorst@snlnet.net
- ↻ United Kingdom Jaco Nel. 46 Atney Rd, Putney, London, UK, SW15 2PS.
Tel +44 (0)20 87892229, email: uk_clivia@yahoo.co.uk
- ↻ USA & CANADA Jim Shields. PO Box 92 Westfield, IN 46074, USA. Tel: 317-896-3925;
Fax: 317-896-5126; Cell: 317-506-4726; e-mail: jshields@indy.net

OTHER OVERSEAS CONTACT PERSONS FOR MEMBERSHIP APPLICATION

- ↻ USA & CANADA William McClelland. 1048 Bollin Avenue, Camarillo, CA 93010-4708, USA,
Tel: 1-805-484 1484; e-mail: william_g_mcclelland@yahoo.com

CONTACT DETAILS FOR CLIVIA CLUBS AND INTEREST GROUPS

- ↻ Cape Clivia Club Joy Woodward (Secretary). PO Box 53219, Kenilworth 7745.
Tel/Fax: +27 21 671 7384; Cell: 072 487 7933;
e-mail: capeclivia@ibox.co.za
- ↻ Eastern Province Clivia Club Willie le Roux (Acting Chairperson). Tel: 041 360 3480;
e-mail: girlylr@telkomsa.net
- ↻ Free State Clivia Club Piet Laubcher (Chairperson). 41 Altona Crescent, Fichardt Park, Bloemfontein,
9301. Tel: +27 51 5228903; Cell: 073 234 5759;
e-mail: vandermescht@absamail.co.za
- ↻ Garden Route Clivia Club Ida Esterhuizen (Secretary). PO Box 1706, George 6530.
Tel: +2744-871 2214; e-mail: kobuse1@telkomsa.net
- ↻ Joburg Clivia Club Glynn Middlewick (Chairperson). 2 Willow Road, Northcliff, 2195.
Tel: +27 11 4761463; e-mail: gcmidd@mweb.co.za
- ↻ KwaZulu-Natal Clivia Club Miranda Train (Secretary). Cell: 083 254 0796; Tel: 033 387 6309;
e-mail: mbrits@3i.co.za
- ↻ Lowveld Clivia Club Maria Grové (Secretary): PO Box 1146, WHITE RIVER 1240.
Tel + 27 13 741 3218 or 083 475 1176; Fax +27 13 741 5087;
e-mail maria@helvet1.agric.za
- ↻ New Zealand Clivia Club Alick McLeman (Secretary). 26 Merfield Street, Glen Innes, Auckland 1072,
NZ. Tel 64-9-5213062; e-mail: clivia@xtra.co.nz
- ↻ Northern Clivia Club Marlene Topham (Secretary). PO Box 54478, NINAPARK, 0156.
Tel & Fax: + 27 12 542 3693; e-mail: marleneto@telkomsa.net
- ↻ Northern Free State Clivia Club Louis Chadinha (Chairperson). PO Box 2204, Welkom, 9460.
Tel: +27573576067; e-mail: lchadinha@xsinet.co.za
- ↻ Border Interest Group Glenn Miles (Chairperson). PO Box 3164. Cambridge, East London 5206
Tel: +27714217812; Fax: 0866577892; e-mail: gmiles@live.co.za
- ↻ Northern KwaZulu-Natal Interest Group Mrs Joey Dovey (Chairperson). PO Box 8402, Newcastle, 2940.
Tel: +2734-3184179/083344 0572; e-mail: doveyw@telkomsa.net
- ↻ Overberg Clivia Interest Group Felicity Weeden. PO Box 1468, Hermanus, 7200.
Tel: + 27 84 5898 297; e-mail: fillylilly@telkomsa.net
- ↻ Waterberg Boslelieklub Ans Jacobs. PO Box 3893, Nylstroom, 0510
Tel & Fax: +27 147173674; e-mail: ansjac@gmail.com
- ↻ Zoutpansberg Enthusiasts Zanette Wessels. PO Box 390, Louis Trichardt, 0920.
Tel: +27 15 5177106 or +27 845700347;
Fax: +27 15 517 7091; e-mail: pawrsa@mweb.co.za

